

TUBELITE, INC.

14000 SERIES STOREFRONT FRAMING (NON-HVHZ)(NON-IMPACT)

TUBELITE
DEPENDABLE
LEADERS IN ECO-EFFICIENT STOREFRONT,
CURTAINWALL AND ENTRANCE SYSTEMS

3056 WALKER RIDGE DRIVE N.W.
WALKER, MICHIGAN 49544
PH: 800 866 2227 FX: 616 301 0008

TITLE: 14000 SERIES
STOREFRONT FRAMING
(NON-HVHZ)(NON-IMPACT)
GENERAL NOTES & TABLE OF
CONTENTS

PREPARED BY:
BUILDING DROPS, INC.
398 E. DANIA BEACH BLVD., STE. 338
DANIA BEACH, FL 33004
PH: (954)959-8478
FAX: (954)744-4738
WEB: www.buildingdrops.com



GENERAL NOTES:

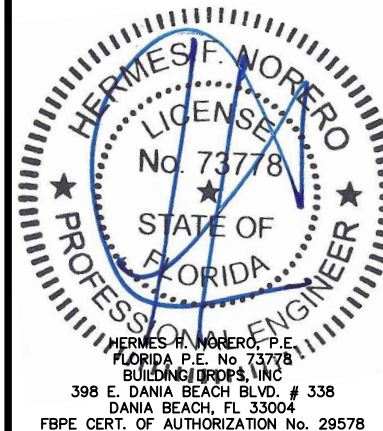
1. THE PRODUCT SHOWN HEREIN IS DESIGNED AND MANUFACTURED TO COMPLY WITH THE CURRENT FLORIDA BUILDING CODE (FBC), **EXCLUDING** HVHZ AND HAS BEEN EVALUATED ACCORDING TO THE FOLLOWING:
 - ASTM E 283-04(12)
 - ASTM E 331-00(09)
 - ASTM E 330-02
 - ASTM E 547-09
 - AAMA 501-15
2. ADEQUACY OF THE EXISTING STRUCTURAL CONCRETE/MASONRY, 2X FRAMING AND METAL STUD FRAMING AS A MAIN WIND FORCE RESISTING SYSTEM CAPABLE OF WITHSTANDING AND TRANSFERRING APPLIED PRODUCT LOADS TO THE FOUNDATION IS THE RESPONSIBILITY OF THE ENGINEER OR ARCHITECT OF RECORD FOR THE PROJECT OF INSTALLATION.
3. 1X AND 2X BUCKS (WHEN USED) SHALL BE DESIGNED AND ANCHORED TO PROPERLY TRANSFER ALL LOADS TO THE STRUCTURE. BUCK DESIGN AND INSTALLATION IS THE RESPONSIBILITY OF THE ENGINEER OR ARCHITECT OF RECORD FOR THE PROJECT OF INSTALLATION.
4. THE INSTALLATION DETAILS DESCRIBED HEREIN ARE GENERIC AND MAY NOT REFLECT ACTUAL CONDITIONS FOR A SPECIFIC SITE. IF SITE CONDITIONS CAUSE INSTALLATION TO DEVIATE FROM THE REQUIREMENTS DETAILED HEREIN, A LICENSED ENGINEER OR ARCHITECT SHALL PREPARE SITE SPECIFIC DOCUMENTS FOR USE WITH THIS DOCUMENT.
5. APPROVED IMPACT PROTECTIVE SYSTEM **IS REQUIRED** ON THIS PRODUCT IN AREAS REQUIRING IMPACT RESISTANCE.
6. FRAME MATERIAL: ALUMINUM 6063-T5 MINIMUM
7. ALL STRUCTURAL MATERIALS & DISSIMILAR METALS SHALL BE PROTECTED, TREATED, PAINTED, COATED, AND/OR ISOLATED AS REQUIRED IN THE APPLICABLE SECTIONS OF THE CURRENT FLORIDA BUILDING CODE AND REFERENCED DESIGN SPECIFICATIONS.
8. GLASS MEETS THE REQUIREMENTS OF ASTM E 1300 GLASS CHARTS. SEE SHEET 3 FOR GLAZING DETAILS.
9. GLASS SHALL BE SET WITH THE USE OF SETTING BLOCKS IN ACCORDANCE WITH CHAPTER 24 OF THE CURRENT FLORIDA BUILDING CODE.
10. GLAZING GASKETS SHALL MEET THE MINIMUM PERFORMANCE REQUIREMENTS AS APPLICABLE IN CHAPTER 24 OF THE FLORIDA BUILDING CODE.

| TABLE OF CONTENTS | |
|-------------------|---|
| SHEET | SHEET DESCRIPTION |
| 1 | GENERAL NOTES & TABLE OF CONTENTS |
| 2 | ELEVATIONS AND ANCHORS LAYOUT |
| 3 | GLAZING DETAILS AND DESIGN PRESSURE TABLE |
| 4 | HORIZONTAL DETAILS |
| 5 | VERTICAL DETAILS AND DESIGN PRESSURES |
| 6 | CORNER DETAILS |
| 7 | DOOR DETAILS |
| 8 | DOOR DESIGN PRESSURE TABLES |
| 9 | DOOR DESIGN PRESSURE TABLES |
| 10 | ANCHOR SCHEDULE & INSTALLATION NOTES |
| 11 | ANCHOR DETAILS |

| MISSILE IMPACT RATING | DESIGN PRESSURE |
|-----------------------|--|
| NOT IMPACT RATED | SEE SHEETS 2, 5, 8 AND 9 FOR DESIGN PRESSURE LIMITATIONS. THE LOWEST APPLICABLE VALUE SHALL BE APPLIED TO THE ENTIRE SYSTEM. |

| REMARKS | BY | DATE |
|-----------------|----|-------|
| FBC 2020 UPDATE | LL | 10/28 |
| | | |
| | | |

THE INSTALLATION DETAILS DESCRIBED HEREIN ARE GENERIC AND MAY NOT REFLECT ACTUAL CONDITIONS FOR A SPECIFIC SITE. IF SITE CONDITIONS CAUSE INSTALLATION TO DEVIATE FROM THE REQUIREMENTS DETAILED HEREIN, A LICENSED ENGINEER OR ARCHITECT SHALL PREPARE SITE SPECIFIC DOCUMENTS FOR USE WITH THIS DOCUMENT



FL #:
FL16992

DATE: **03.26.19**

| | |
|-----------------------|------------------------|
| DWG. BY: RV | CHK. BY: HFN |
|-----------------------|------------------------|

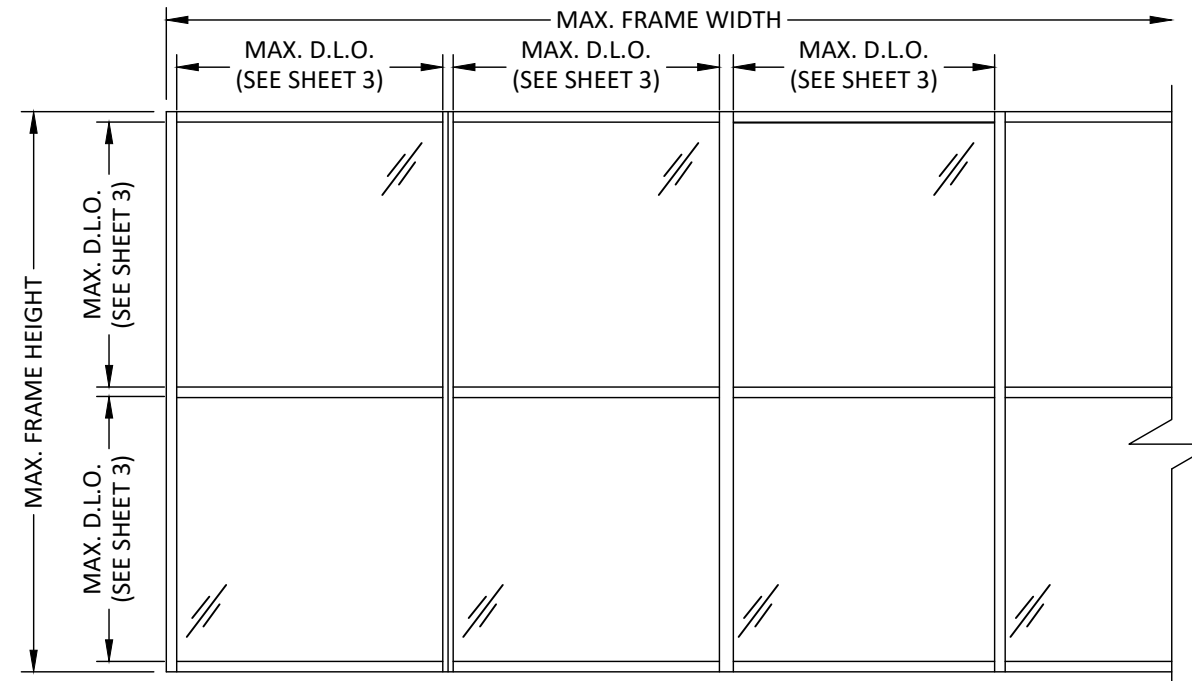
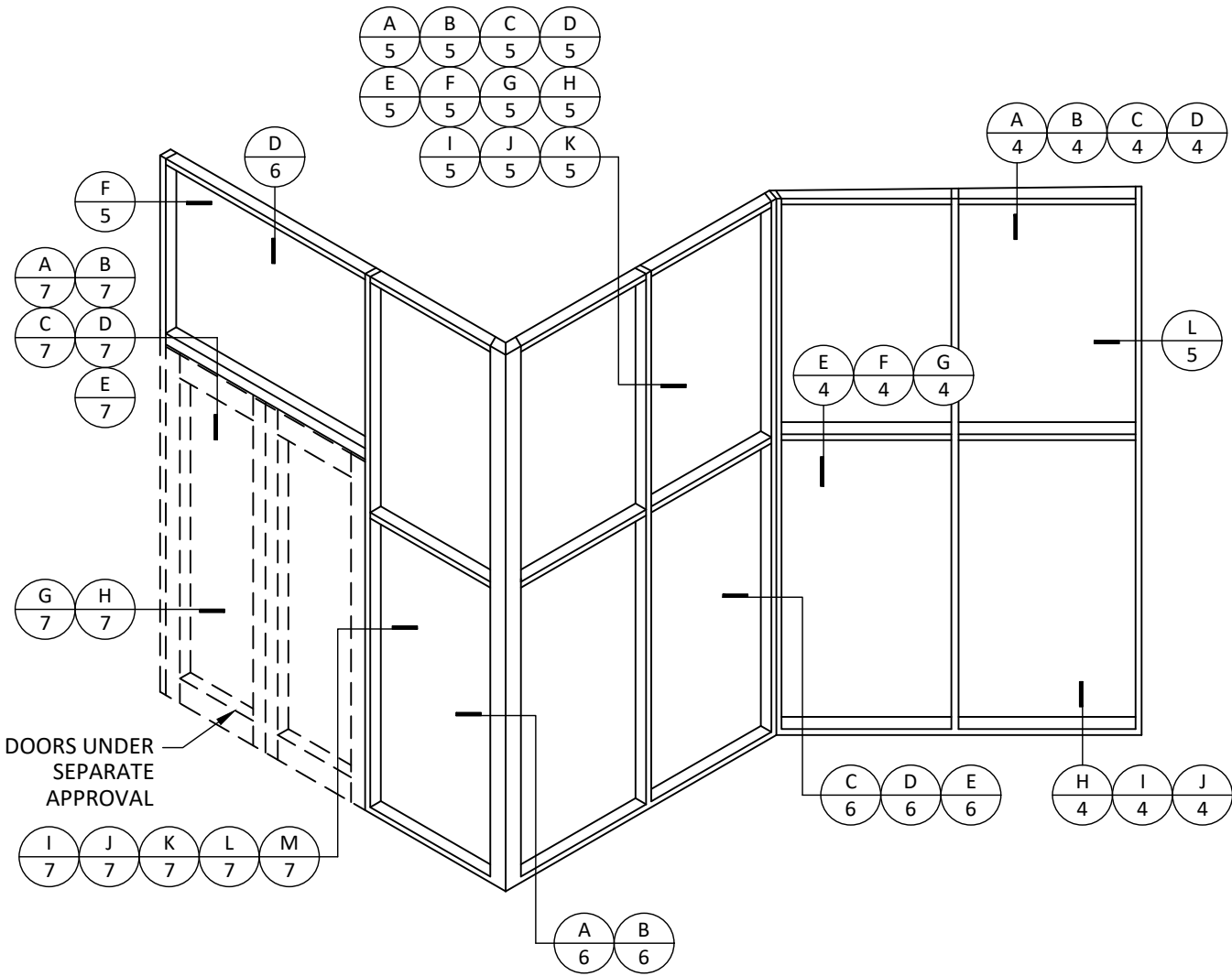
SCALE: **NTS**

DWG. #: **TLI004**

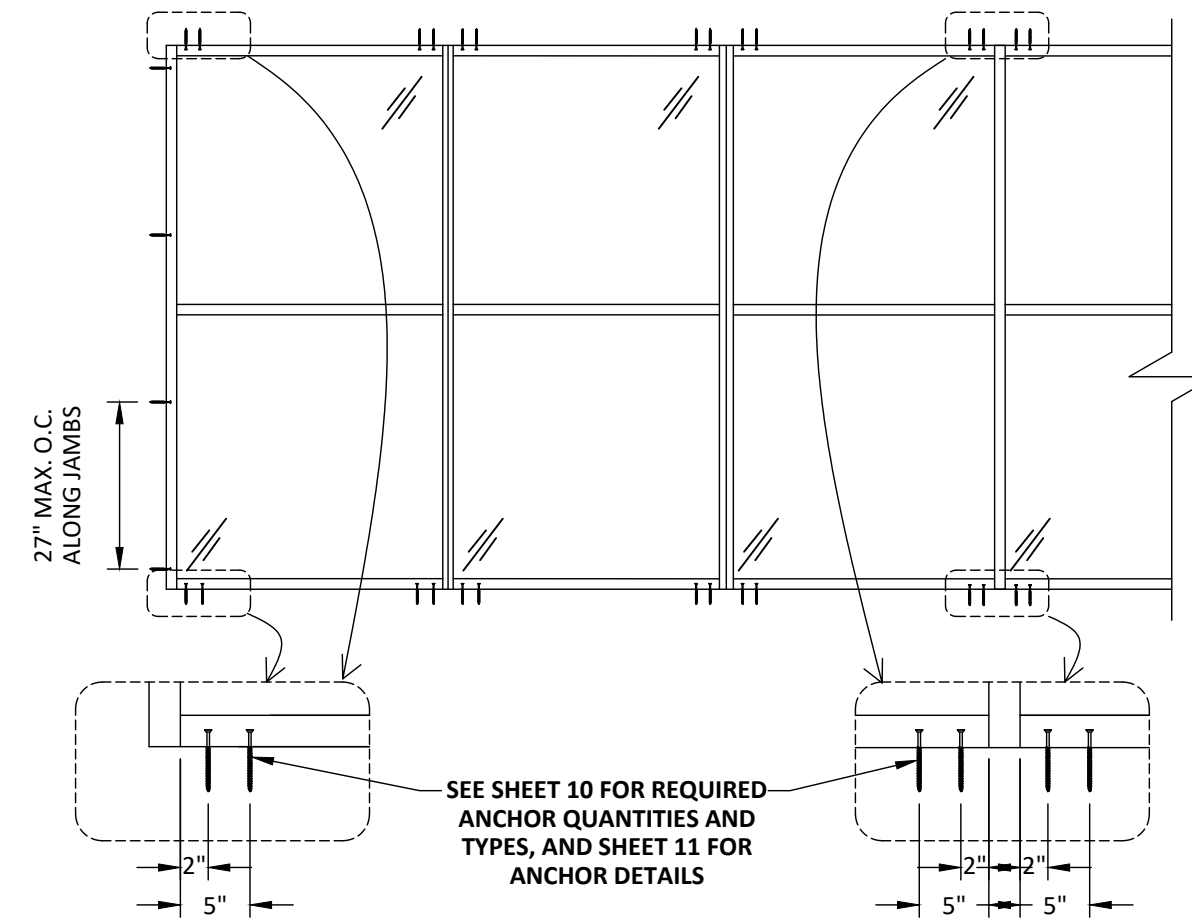
SECTION
1

12/20/2020 7:50 PM

c:\users\p50\onedrive - building drops, inc.\t\1004 2020-12-20.dwg



A STOREFRONT ELEVATION
ELEVATION



B STOREFRONT ELEVATION
TYPICAL ANCHOR LAYOUT

TUBELITE
DEPENDABLE
LEADERS IN ECO-EFFICIENT STOREFRONT, CURTAINWALL AND ENTRANCE SYSTEMS

3056 WALKER RIDGE DRIVE N.W.
WALKER, MICHIGAN 49544
PH: 800 866 2227 FX: 616 301 0008

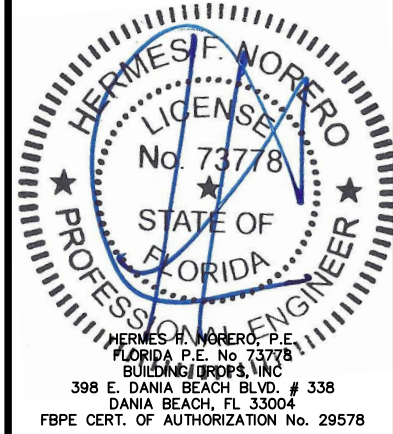
TITLE: 14000 SERIES
STOREFRONT FRAMING
(NON-HVHZ)(NON-IMPACT)
ELEVATIONS AND ANCHOR LAYOUT

PREPARED BY:
BUILDING DROPS, INC.
398 E. DANIA BEACH BLVD., STE. 338
DANIA BEACH, FL 33004
PH: (954) 959-8478
FAX: (954) 744-4738
WEB: www.buildingdrops.com



| REMARKS | BY | DATE |
|-----------------|----|-------|
| FBC 2020 UPDATE | LL | 10/28 |
| | | |
| | | |

THE INSTALLATION DETAILS DESCRIBED HEREIN ARE GENERIC AND MAY NOT REFLECT ACTUAL CONDITIONS FOR A SPECIFIC SITE. IF SITE CONDITIONS CAUSE INSTALLATION TO DEVIATE FROM THE REQUIREMENTS DETAILED HEREIN, A LICENSED ENGINEER OR ARCHITECT SHALL PREPARE SITE SPECIFIC DOCUMENTS FOR USE WITH THIS DOCUMENT



FL #: **FL16992**

DATE: **03.26.19**

| | |
|-----------------------|------------------------|
| DWG. BY: RV | CHK. BY: HFN |
|-----------------------|------------------------|

SCALE: **NTS**

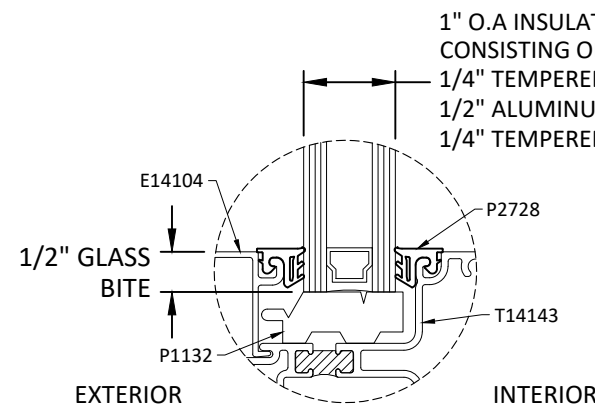
DWG. #: **TL1004**

SECTION
2
OF 11

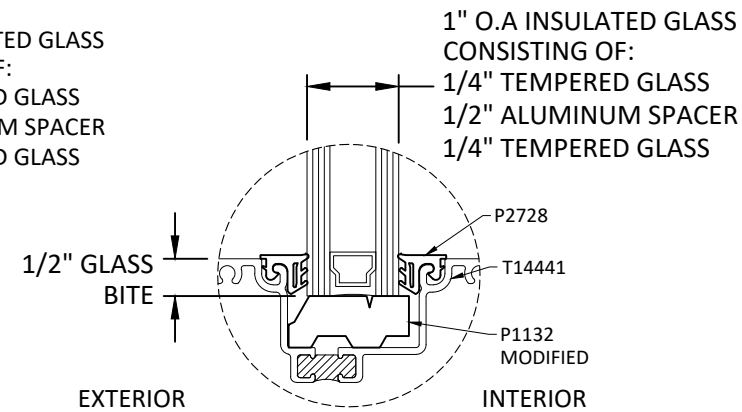
GLAZING DETAILS AND DESIGN PRESSURE TABLE

| GLASS LOAD CAPACITY | | |
|-----------------------------|------------|---------------------------|
| DAYLIGHT OPENING DIMS. (in) | | DESIGN PRESSURE (+/- PSF) |
| DLO WIDTH | DLO HEIGHT | TYPE 'A', 'B' & 'C' |
| 25 | 46.3125 | 45.0 |
| 28 | | 45.0 |
| 31 | | 44.5 |
| 34 | | 40.6 |
| 37 | | 37.3 |
| 40 | | 34.5 |
| 43 | | 32.1 |
| 46 | | 30.0 |
| 49 | | 31.5 |
| 52 | | 32.1 |
| 55 | 49.625 | 29.1 |
| 58 | | 26.6 |
| 25 | | 45.0 |
| 28 | | 45.0 |
| 31 | | 43.4 |
| 34 | | 40.6 |
| 37 | | 37.3 |
| 40 | | 34.5 |
| 43 | | 32.1 |
| 46 | | 30.0 |
| 49 | 28.2 | |
| 52 | 29.1 | |
| 55 | 30.7 | |
| 58 | 27.9 | |
| 25 | 55.625 | 45.0 |
| 28 | | 44.2 |
| 31 | | 41.4 |
| 34 | | 39.2 |
| 37 | | 37.3 |
| 40 | | 34.5 |
| 43 | | 32.1 |
| 46 | | 30.0 |
| 49 | | 28.2 |
| 52 | | 26.5 |
| 55 | 61.625 | 25.1 |
| 25 | | 45.0 |
| 28 | | 42.8 |
| 31 | | 39.9 |
| 34 | | 37.6 |
| 37 | | 35.7 |
| 40 | | 34.2 |
| 43 | | 32.1 |
| 46 | | 30.0 |
| 49 | | 28.2 |
| 52 | 26.5 | |

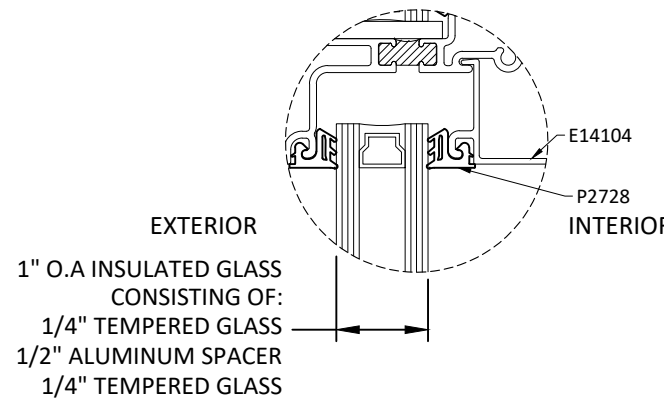
| GLASS LOAD CAPACITY | | | | |
|-----------------------------|------------|---------------------------|--------|------|
| DAYLIGHT OPENING DIMS. (in) | | DESIGN PRESSURE (+/- PSF) | | |
| DLO WIDTH | DLO HEIGHT | TYPE 'A', 'B' & 'C' | | |
| 25 | 67.625 | 45.0 | | |
| 28 | | 41.7 | | |
| 31 | | 38.7 | | |
| 34 | | 36.4 | | |
| 37 | | 34.4 | | |
| 40 | | 32.8 | | |
| 43 | | 31.6 | | |
| 46 | | 30.0 | | |
| 25 | | 73.625 | 44.6 | |
| 28 | | | 40.8 | |
| 31 | 37.8 | | | |
| 34 | 35.4 | | | |
| 37 | 33.4 | | | |
| 40 | 31.8 | | | |
| 43 | 30.4 | | | |
| 25 | 79.625 | | 43.9 | |
| 28 | | | 40.1 | |
| 31 | | | 37.1 | |
| 34 | | 34.6 | | |
| 37 | | 32.6 | | |
| 40 | | 30.9 | | |
| 25 | | 85.625 | 43.3 | |
| 28 | | | 39.5 | |
| 31 | | | 36.4 | |
| 34 | | | 34.0 | |
| 37 | 31.9 | | | |
| 25 | 91.625 | | 42.9 | |
| 28 | | | 39.0 | |
| 31 | | | 35.9 | |
| 34 | | | 33.4 | |
| 28 | | | 97.625 | 38.6 |
| 31 | | 35.5 | | |
| 25 | | 103.625 | | 42.1 |
| 28 | | | | 38.2 |



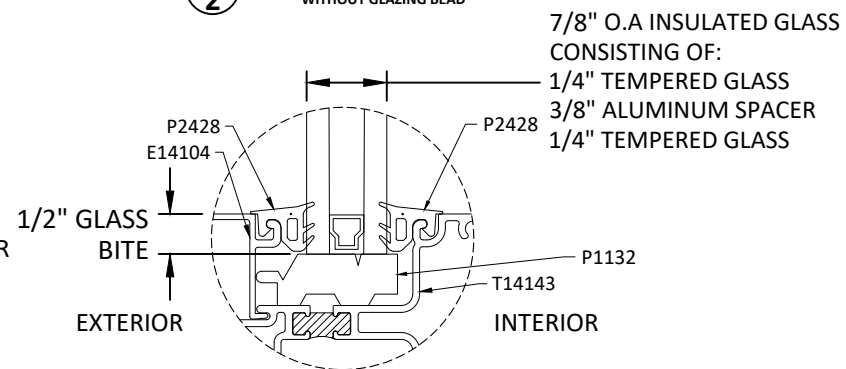
GLAZING DETAIL 1
OUTSIDE GLAZED



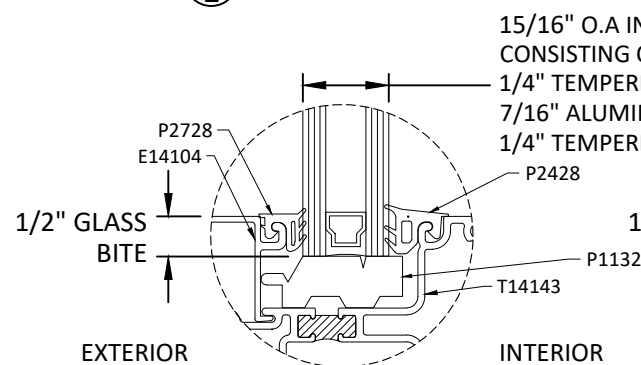
GLAZING DETAIL 2
WITHOUT GLAZING BEAD



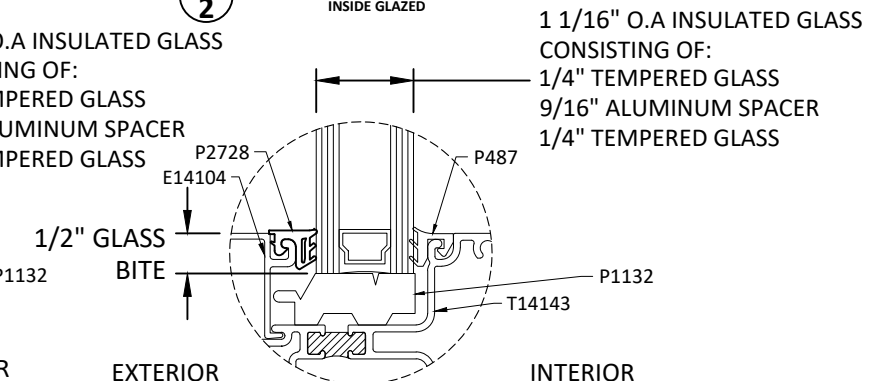
GLAZING DETAIL 3
INSIDE GLAZED



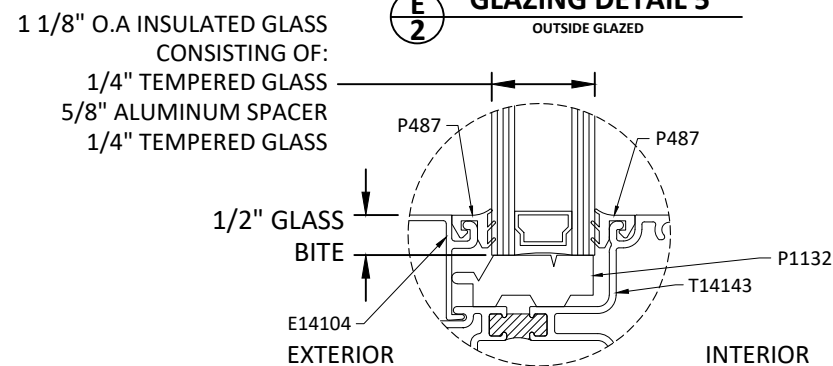
GLAZING DETAIL 4
INSIDE GLAZED



GLAZING DETAIL 5
OUTSIDE GLAZED



GLAZING DETAIL 6
OUTSIDE GLAZED



GLAZING DETAIL 7
OUTSIDE GLAZED

- GLAZING NOTES:**
- GLASS TYPE COMPLIES WITH ASTM E1300 REQUIREMENTS AS WELL AS APPLICABLE SAFETY GLAZING REQUIREMENTS PER THE FBC. TEMPER AND SAFETY GLAZING REQUIREMENTS SHALL BE REVIEWED ON A SITE SPECIFIC BASIS.
 - SETTING BLOCK DUROMETER HARDNESS OF 70-90 (SHORE A) AS REFERENCED IN FBC CHAPTER 24.
 - TWO APPROVED SETTING BLOCKS SHALL BE USED FOR GLASS WIDER THAN 36" AS PER FBC CHAPTER 24.
 - D.L.O. AND DESIGN PRESSURES MAY NOT EXCEED MAX VALUES IN SIZE CHARTS.

TUBELITE
DEPENDABLE
LEADERS IN ECO-EFFICIENT STOREFRONT,
CURTAINWALL AND ENTRANCE SYSTEMS

3056 WALKER RIDGE DRIVE N.W.
WALKER, MICHIGAN 49544
PH: 800 866 2227 FX: 616 301 0008

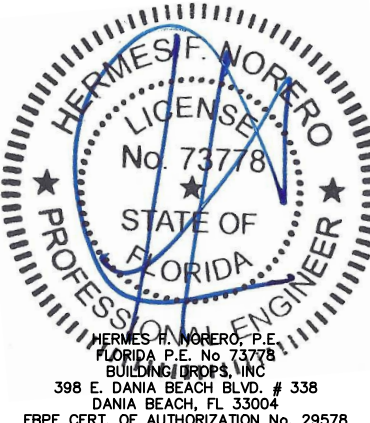
TITLE: 14000 SERIES
STOREFRONT FRAMING
(NON-HVHZ)/(NON-IMPACT)
GLAZING DETAILS AND DESIGN
PRESSURE TABLE

PREPARED BY:
BUILDING DROPS, INC.
398 E. DANIA BEACH BLVD., STE. 338
DANIA BEACH, FL 33004
PH: (954) 959-8478
FAX: (954) 744-4738
WEB: www.buildingdrops.com



| REMARKS | BY | DATE |
|-----------------|----|-------|
| FBC 2020 UPDATE | LL | 10/28 |
| | | |
| | | |

THE INSTALLATION DETAILS DESCRIBED HEREIN ARE GENERIC AND MAY NOT REFLECT ACTUAL CONDITIONS FOR A SPECIFIC SITE. IF SITE CONDITIONS CAUSE INSTALLATION TO DEVIATE FROM THE REQUIREMENTS DETAILED HEREIN, A LICENSED ENGINEER OR ARCHITECT SHALL PREPARE SITE SPECIFIC DOCUMENTS FOR USE WITH THIS DOCUMENT



| | |
|----------|-----------------|
| FL #: | FL16992 |
| DATE: | 03.26.19 |
| DWG. BY: | RV |
| CHK. BY: | HFN |
| SCALE: | NTS |
| DWG. #: | TLI004 |
| SECTION | 3 |

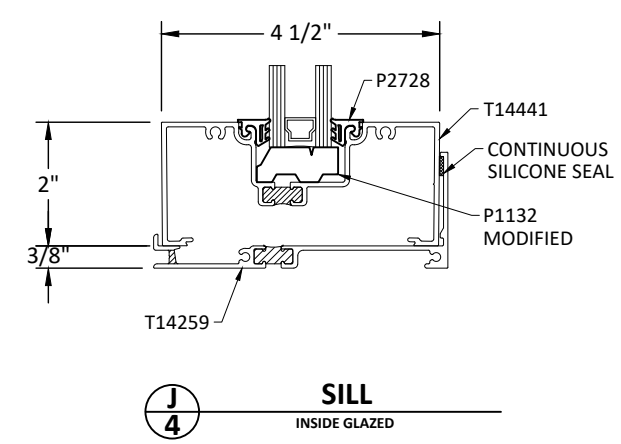
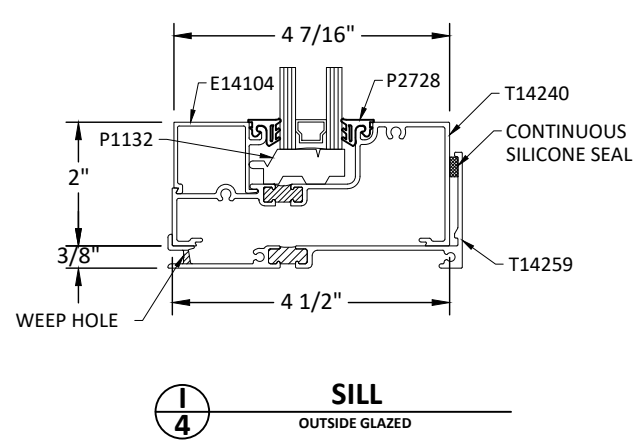
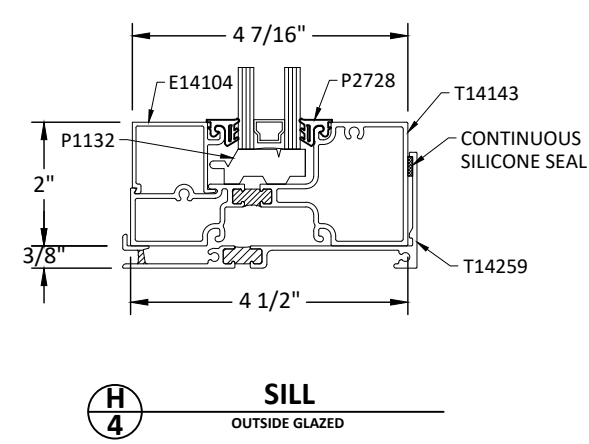
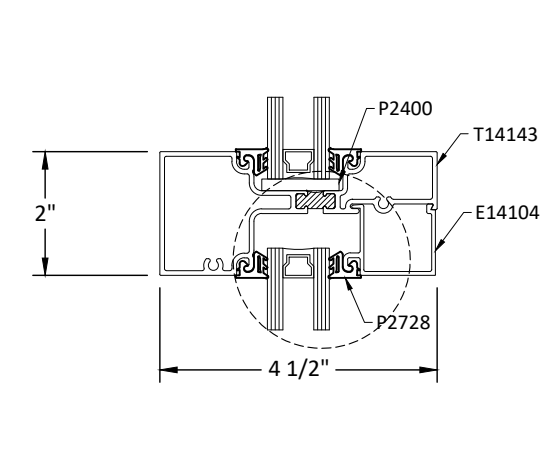
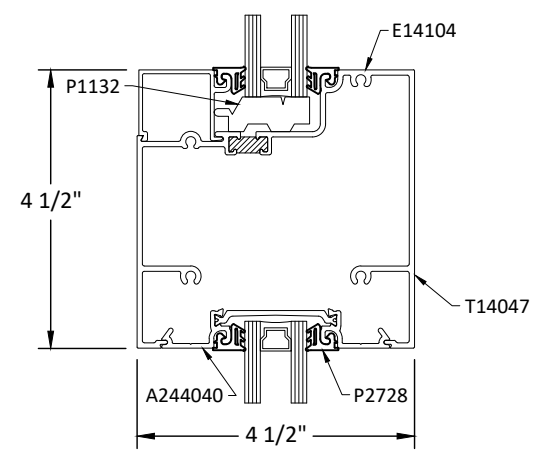
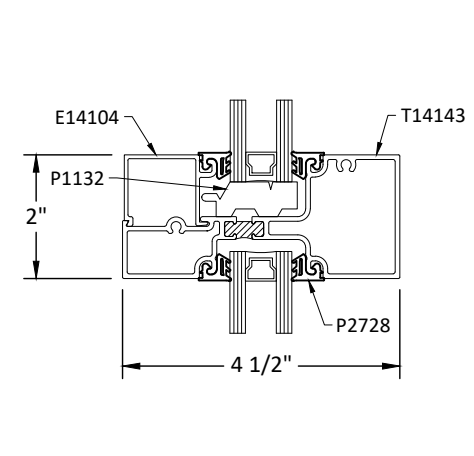
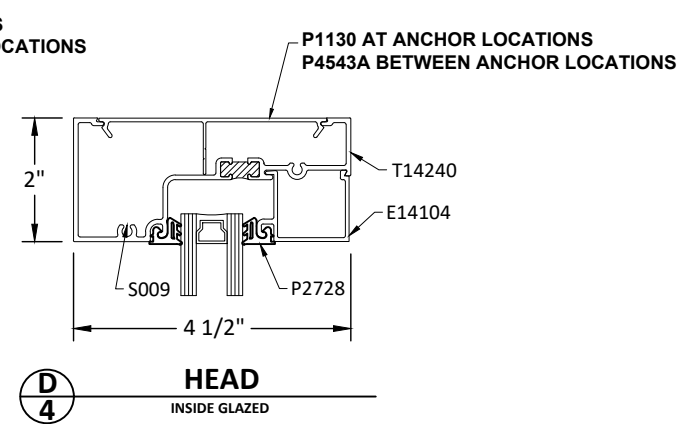
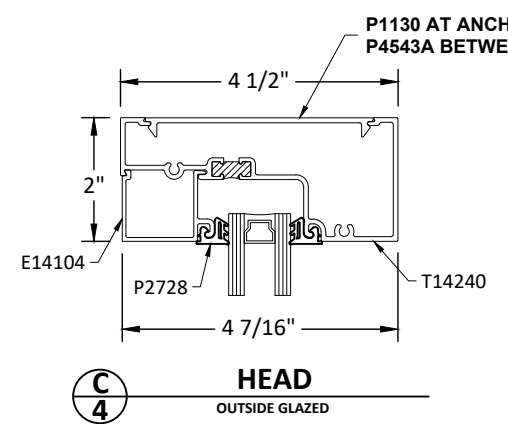
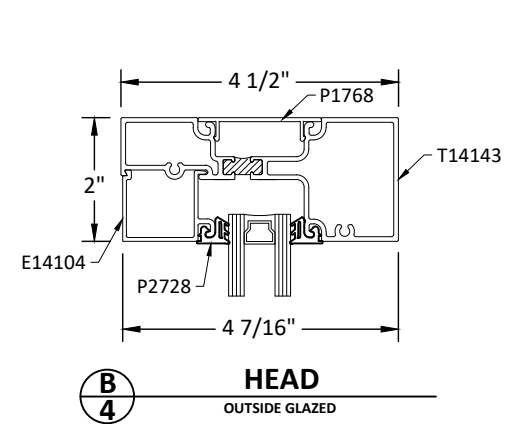
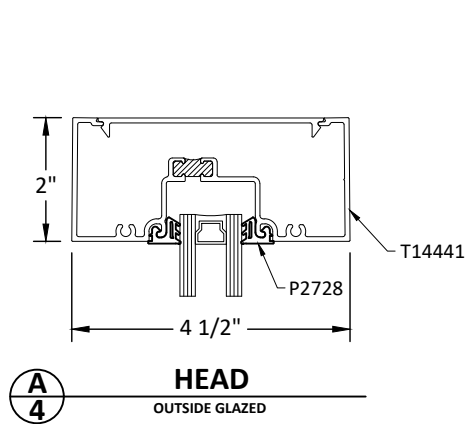
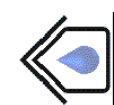
HORIZONTAL DETAILS

TUBELITE
DEPENDABLE
LEADERS IN ECO-EFFICIENT STOREFRONT,
CURTAINWALL AND ENTRANCE SYSTEMS

3056 WALKER RIDGE DRIVE N.W.
WALKER, MICHIGAN 49544
PH: 800 866 2227 FX: 616 301 0008

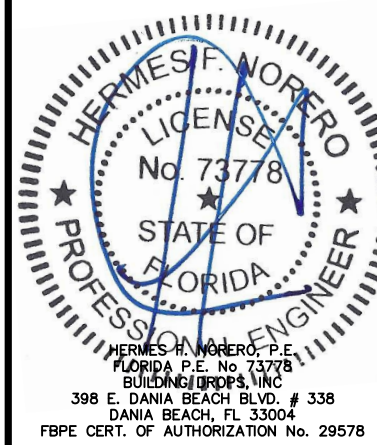
TITLE: 14000 SERIES
STOREFRONT FRAMING
(NON-HVHZ)(NON-IMPACT)
OUTSIDE GLAZED
HORIZONTAL DETAILS

PREPARED BY:
BUILDING DROPS, INC.
398 E. DANIA BEACH BLVD., STE. 338
DANIA BEACH, FL 33004
PH: (954) 959-8478
FAX: (954) 744-4738
WEB: www.buildingdrops.com



| REMARKS | BY | DATE |
|-----------------|----|-------|
| FBC 2020 UPDATE | LL | 10/28 |
| | | |
| | | |

THE INSTALLATION DETAILS DESCRIBED HEREIN ARE GENERIC AND MAY NOT REFLECT ACTUAL CONDITIONS FOR A SPECIFIC SITE. IF SITE CONDITIONS CAUSE INSTALLATION TO DEVIATE FROM THE REQUIREMENTS DETAILED HEREIN, A LICENSED ENGINEER OR ARCHITECT SHALL PREPARE SITE SPECIFIC DOCUMENTS FOR USE WITH THIS DOCUMENT



FL #: **FL16992**

DATE: **03.26.19**

DWG. BY: **RV** CHK. BY: **HFN**

SCALE: **NTS**

DWG. #: **TLI004**

SECTION **4**

NOTE:
THERMALLY BROKEN T14000
PROFILES SHOWN. NON-THERMALLY
BROKEN E14000 PROFILES ARE
QUALIFIED FOR THE SAME DETAILS
AND RATINGS.

VERTICAL DETAILS AND DESIGN PRESSURES

TUBELITE
 DEPENDABLE
 LEADERS IN ECO-EFFICIENT STOREFRONT,
 CURTAINWALL AND ENTRANCE SYSTEMS

3056 WALKER RIDGE DRIVE N.W.
 WALKER, MICHIGAN 49544
 PH: 800 866 2227 FX: 616 301 0008

TITLE: 14000 SERIES
 STOREFRONT FRAMING
 (NON-HVHZ)(NON-IMPACT)
 OUTSIDE GLAZED VERTICAL
 DETAILS AND DESIGN PRESSURES

PREPARED BY:
BUILDING DROPS, INC.
 398 E. DANIA BEACH BLVD., STE. 338
 DANIA BEACH, FL 33004
 PH: (954) 399-8478
 FAX: (954) 744-4738
 WEB: www.buildingdrops.com

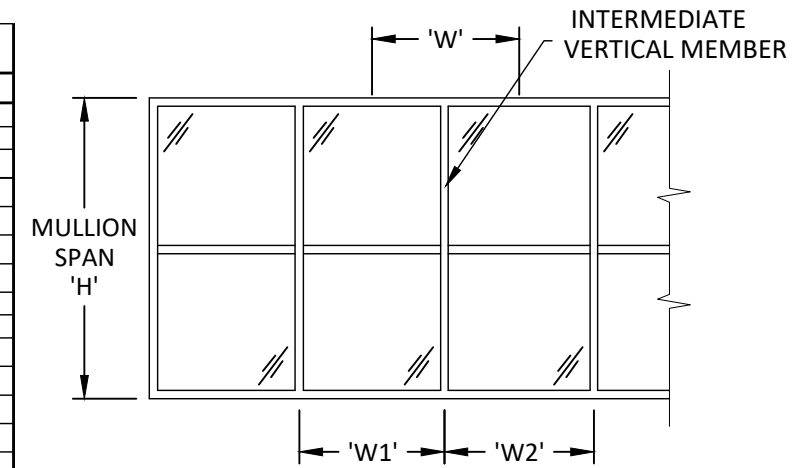


DESIGN PRESSURE TABLE - WITH STEEL REINFORCING

| MULLION SPAN 'H' (INCHES) | MULLION TRIBUTARY WIDTH 'W' (INCHES) | | | | | | | | | | | | |
|---------------------------|--------------------------------------|------|------|------|------|------|------|------|------|------|------|------|------|
| | 27 | 30 | 33 | 36 | 39 | 42 | 45 | 48 | 51 | 54 | 57 | 60 | |
| 72 | 45.0 | 45.0 | 45.0 | 45.0 | 45.0 | 45.0 | 45.0 | 45.0 | 45.0 | 45.0 | 45.0 | 45.0 | 45.0 |
| 78 | 45.0 | 45.0 | 45.0 | 45.0 | 45.0 | 45.0 | 45.0 | 45.0 | 45.0 | 45.0 | 45.0 | 45.0 | 45.0 |
| 84 | 45.0 | 45.0 | 45.0 | 45.0 | 45.0 | 45.0 | 45.0 | 45.0 | 45.0 | 45.0 | 45.0 | 45.0 | 45.0 |
| 90 | 45.0 | 45.0 | 45.0 | 45.0 | 45.0 | 45.0 | 45.0 | 45.0 | 45.0 | 45.0 | 45.0 | 45.0 | 45.0 |
| 96 | 45.0 | 45.0 | 45.0 | 45.0 | 45.0 | 45.0 | 45.0 | 45.0 | 45.0 | 45.0 | 45.0 | 45.0 | 44.4 |
| 99 | 45.0 | 45.0 | 45.0 | 45.0 | 45.0 | 45.0 | 45.0 | 45.0 | 45.0 | 45.0 | 45.0 | 43.7 | 42.4 |
| 102 | 45.0 | 45.0 | 45.0 | 45.0 | 45.0 | 45.0 | 45.0 | 45.0 | 45.0 | 43.4 | 41.9 | 40.7 | - |
| 108 | 45.0 | 45.0 | 45.0 | 45.0 | 45.0 | 45.0 | 45.0 | 43.6 | 41.8 | 40.2 | 38.8 | 37.5 | - |
| 114 | 45.0 | 45.0 | 45.0 | 45.0 | 45.0 | 45.0 | 43.6 | 41.6 | 39.8 | 38.3 | 36.9 | 35.7 | - |
| 120 | 45.0 | 45.0 | 45.0 | 45.0 | 44.8 | 42.3 | 40.0 | 38.1 | 36.5 | 35.0 | 33.7 | - | - |
| 126 | 45.0 | 45.0 | 45.0 | 45.0 | 42.3 | 39.8 | 37.7 | 35.9 | 34.3 | 32.9 | - | - | - |
| 132 | 45.0 | 45.0 | 45.0 | 42.8 | 40.0 | 37.7 | 35.7 | 33.9 | 32.3 | - | - | - | - |
| 138 | 45.0 | 45.0 | 43.8 | 40.7 | 38.0 | 35.8 | 33.8 | 32.1 | - | - | - | - | - |
| 144 | 45.0 | 45.0 | 41.8 | 38.7 | 36.2 | 34.0 | 32.1 | 30.5 | - | - | - | - | - |
| 146 | 45.0 | 44.7 | 41.1 | 38.1 | 35.6 | 33.5 | 31.6 | 30.0 | - | - | - | - | - |
| 150 | 45.0 | 43.1 | 39.3 | 36.1 | 33.5 | 31.2 | 29.3 | - | - | - | - | - | - |
| 156 | 42.4 | 38.2 | 34.9 | 32.1 | 29.7 | 27.7 | - | - | - | - | - | - | - |

DESIGN PRESSURE TABLE - WITH NO STEEL REINFORCING

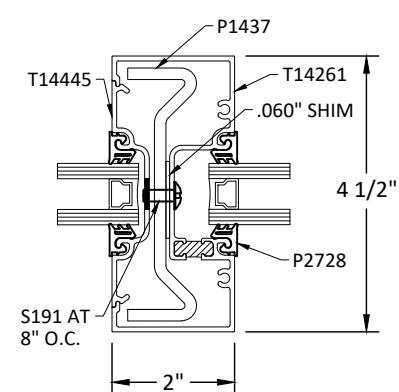
| MULLION SPAN 'H' (INCHES) | MULLION TRIBUTARY WIDTH 'W' (INCHES) | | | | | | | | | | | | |
|---------------------------|--------------------------------------|------|------|------|------|------|------|------|------|------|------|------|------|
| | 27 | 30 | 33 | 36 | 39 | 42 | 45 | 48 | 51 | 54 | 57 | 60 | |
| 72 | 45.0 | 45.0 | 45.0 | 45.0 | 45.0 | 45.0 | 45.0 | 45.0 | 45.0 | 44.4 | 43.6 | 42.9 | |
| 78 | 45.0 | 45.0 | 45.0 | 45.0 | 45.0 | 45.0 | 45.0 | 43.2 | 41.7 | 40.3 | 39.2 | 38.3 | 37.5 |
| 84 | 45.0 | 45.0 | 45.0 | 45.0 | 42.9 | 40.8 | 39.0 | 37.5 | 36.2 | 35.1 | - | - | - |
| 90 | 45.0 | 45.0 | 44.5 | 41.7 | 39.3 | 37.3 | 35.6 | 34.1 | 32.8 | - | - | - | - |
| 96 | 45.0 | 44.4 | 41.2 | 38.5 | 36.2 | 34.3 | 32.7 | 31.3 | - | - | - | - | - |
| 99 | 45.0 | 42.9 | 39.7 | 37.0 | 34.8 | 33.0 | 31.4 | 30.0 | - | - | - | - | - |
| 102 | 45.0 | 41.3 | 37.8 | 34.9 | 32.5 | 30.5 | 28.8 | - | - | - | - | - | - |
| 108 | 38.3 | 34.6 | 31.7 | 29.3 | 27.2 | 25.5 | - | - | - | - | - | - | - |
| 114 | 34.2 | 31.0 | 28.3 | 26.2 | 24.3 | 22.8 | - | - | - | - | - | - | - |
| 120 | 27.8 | 25.1 | 22.9 | 21.2 | 19.7 | - | - | - | - | - | - | - | - |
| 126 | 23.9 | 21.6 | 19.8 | 18.2 | - | - | - | - | - | - | - | - | - |
| 132 | 20.8 | 18.8 | 17.1 | 15.8 | - | - | - | - | - | - | - | - | - |
| 138 | 18.2 | 16.4 | 15.0 | - | - | - | - | - | - | - | - | - | - |
| 144 | 16.0 | 14.4 | 13.2 | - | - | - | - | - | - | - | - | - | - |
| 146 | 15.3 | 13.8 | - | - | - | - | - | - | - | - | - | - | - |
| 150 | 14.1 | 12.7 | - | - | - | - | - | - | - | - | - | - | - |
| 156 | 12.5 | 11.3 | - | - | - | - | - | - | - | - | - | - | - |



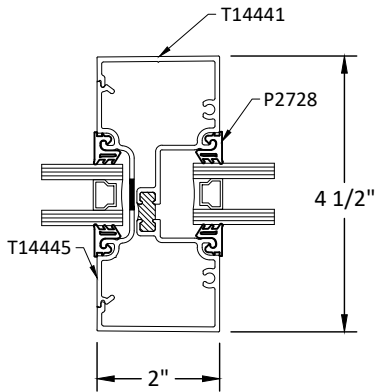
G
4 ELEVATION A

$$\text{TRIBUTARY WIDTH (W)} = \frac{W1 + W2}{2}$$

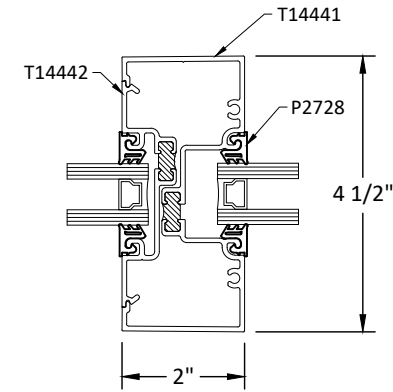
NOTE:
 THERMALLY BROKEN T14000
 PROFILES SHOWN. NON-THERMALLY
 BROKEN E14000 PROFILES ARE
 QUALIFIED FOR THE SAME DETAILS
 AND RATINGS.



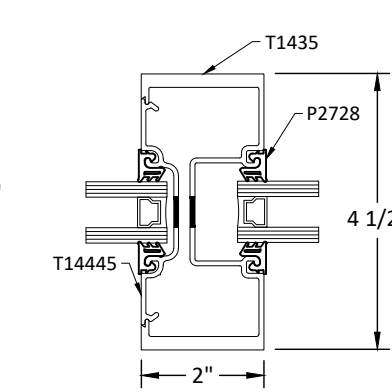
A
5 MULLION OPTION 1



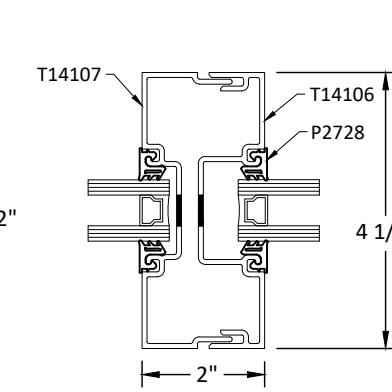
B
5 MULLION OPTION 2



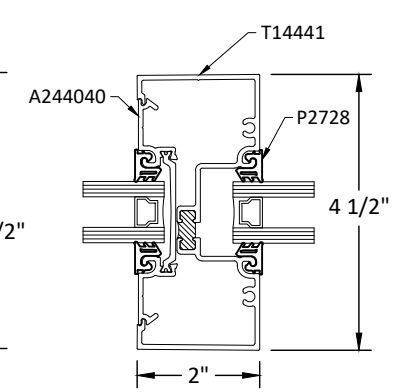
C
5 MULLION OPTION 3



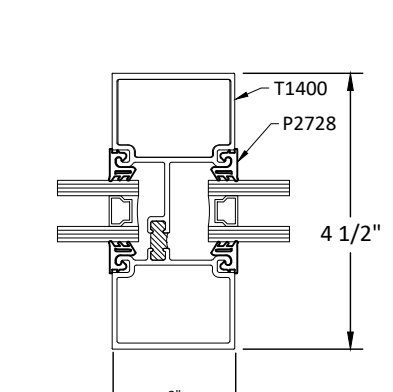
D
5 MULLION OPTION 4



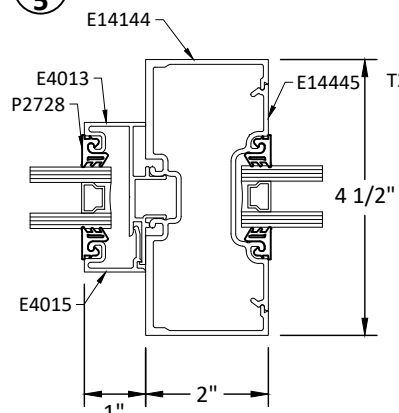
E
5 MULLION OPTION 5



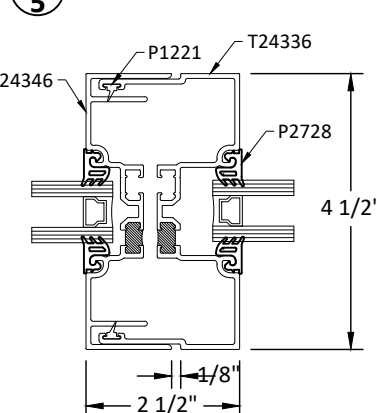
F
5 MULLION OPTION 6



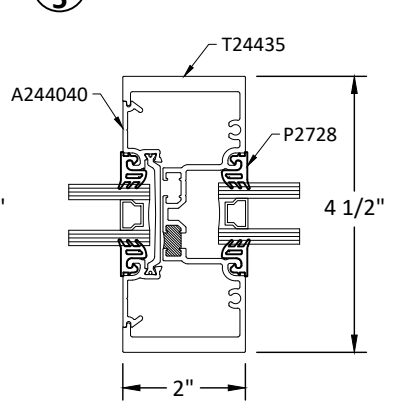
G
5 MULLION OPTION 7



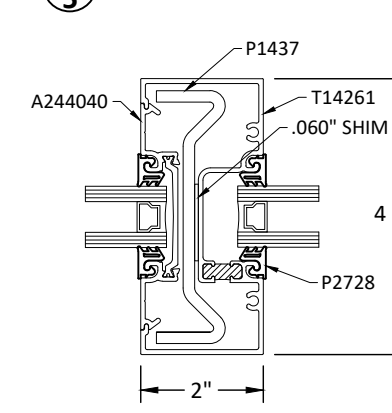
G
5 MULLION OPTION 8



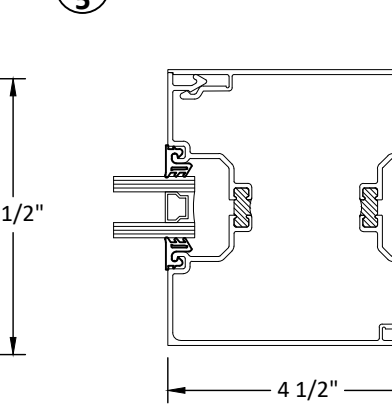
H
5 MULLION OPTION 9



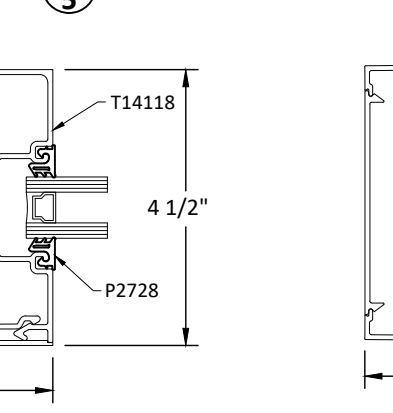
I
5 MULLION OPTION 10



J
5 MULLION OPTION 11

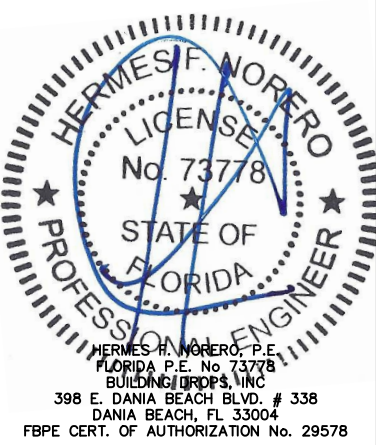


K
5 MULLION OPTION 12



L
5 JAMB OPTION 1

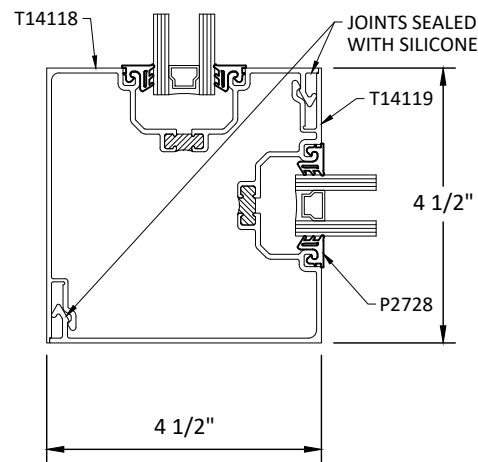
THE INSTALLATION DETAILS DESCRIBED HEREIN ARE GENERIC
 AND MAY NOT REFLECT ACTUAL CONDITIONS FOR A SPECIFIC
 SITE. IF SITE CONDITIONS CAUSE INSTALLATION TO DEVIATE
 FROM THE REQUIREMENTS DETAILED HEREIN, A LICENSED
 ENGINEER OR ARCHITECT SHALL PREPARE SITE SPECIFIC
 DOCUMENTS FOR USE WITH THIS DOCUMENT



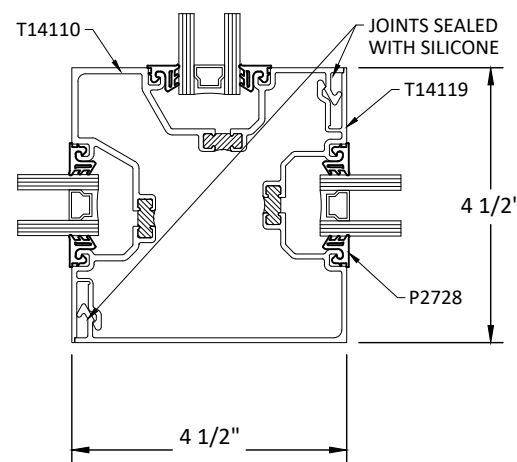
FL #: **FL16992**
 DATE: **03.26.19**
 DWG. BY: **RV** CHK. BY: **HFN**
 SCALE: **NTS**
 DWG. #: **TL1004**

SECTION
5
 OF 11

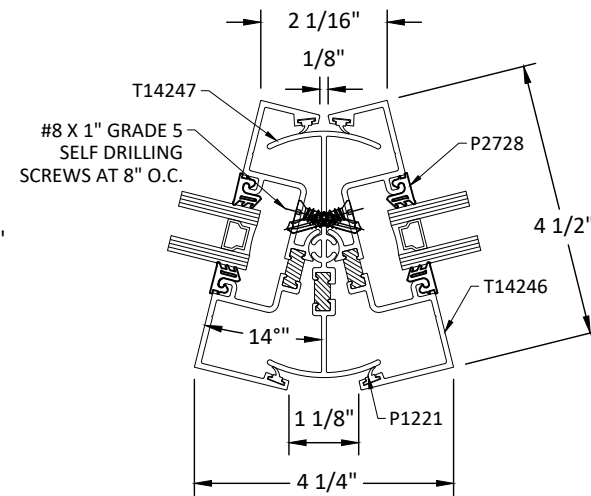
CORNER DETAILS



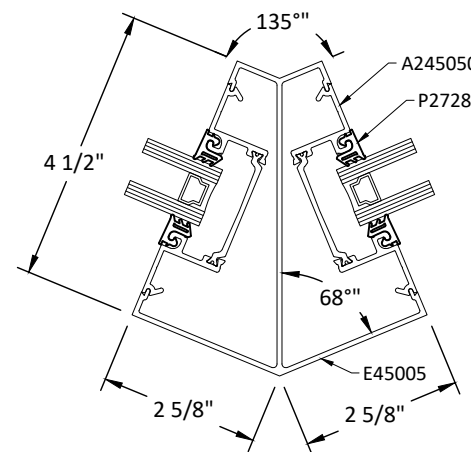
A 90° CORNER DETAIL



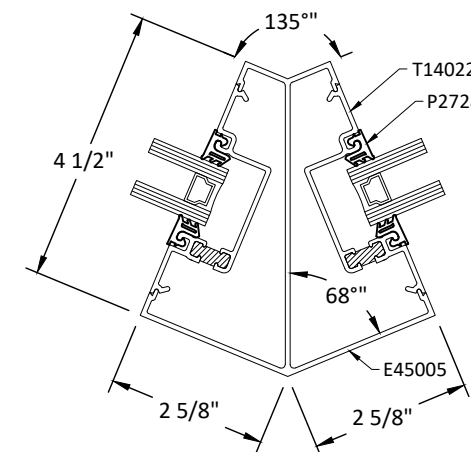
B 90° CORNER DETAIL
TRIPLE



C VARIABLE CORNER



D 135° CORNER DETAIL



E 135° CORNER DETAIL

NOTE:
CORNER CONDITIONS ARE
QUALIFIED FOR DESIGN PRESSURE
VALUES AND SIZES SHOWN ON
SHEET 5 FOR VERTICAL MEMBERS
WITHOUT STEEL REINFORCEMENT

TUBELITE
DEPENDABLE
LEADERS IN ECO-EFFICIENT STOREFRONT,
CURTAINWALL AND ENTRANCE SYSTEMS

3056 WALKER RIDGE DRIVE N.W.
WALKER, MICHIGAN 49544
PH: 800 866 2227 FX: 616 301 0008

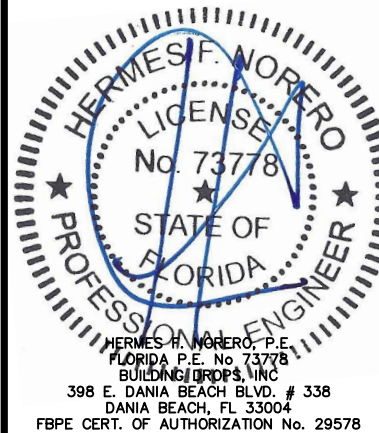
TITLE: 14000 SERIES
STOREFRONT FRAMING
(NON-HVHZ)(NON-IMPACT)
OUTSIDE GLAZED CORNER DETAILS

PREPARED BY:
BUILDING DROPS, INC.
398 E. DANIA BEACH BLVD., STE. 338
DANIA BEACH, FL 33004
PH: (954) 999-8478
FAX: (954) 744-4738
WEB: www.buildingdrops.com



| REMARKS | BY | DATE |
|-----------------|----|-------|
| FBC 2020 UPDATE | LL | 10/28 |
| | | |
| | | |

THE INSTALLATION DETAILS DESCRIBED HEREIN ARE GENERIC AND MAY NOT REFLECT ACTUAL CONDITIONS FOR A SPECIFIC SITE. IF SITE CONDITIONS CAUSE INSTALLATION TO DEVIATE FROM THE REQUIREMENTS DETAILED HEREIN, A LICENSED ENGINEER OR ARCHITECT SHALL PREPARE SITE SPECIFIC DOCUMENTS FOR USE WITH THIS DOCUMENT



FL #:
FL16992

DATE: **03.26.19**

DWG. BY: **RV** CHK. BY: **HFN**

SCALE: **NTS**

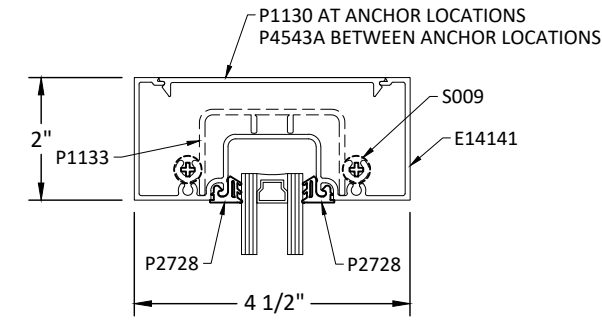
DWG. #: **TLI004**

SECTION
6

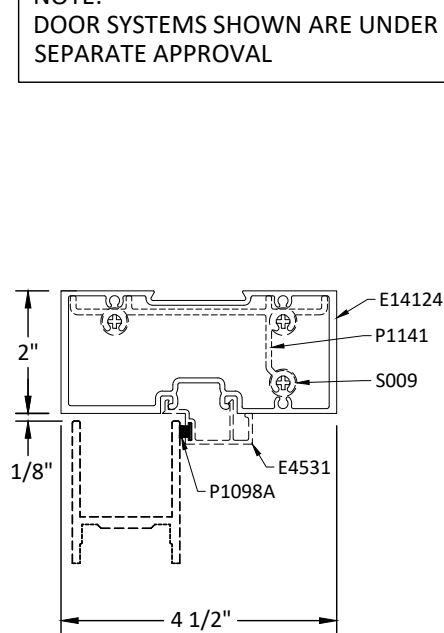
12/20/2020 7:50 PM

DOOR DETAILS

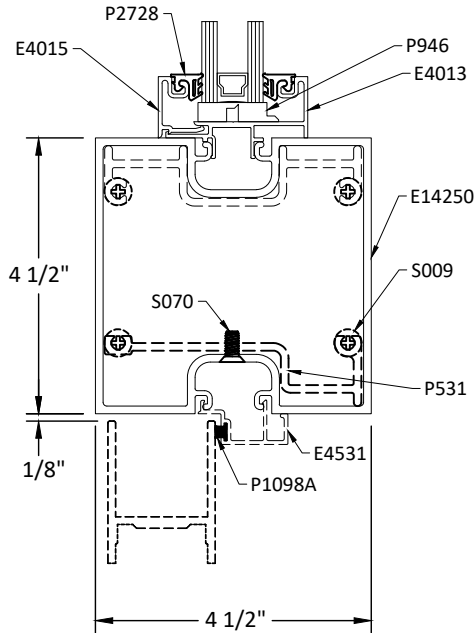
NOTE:
DOOR SYSTEMS SHOWN ARE UNDER
SEPARATE APPROVAL



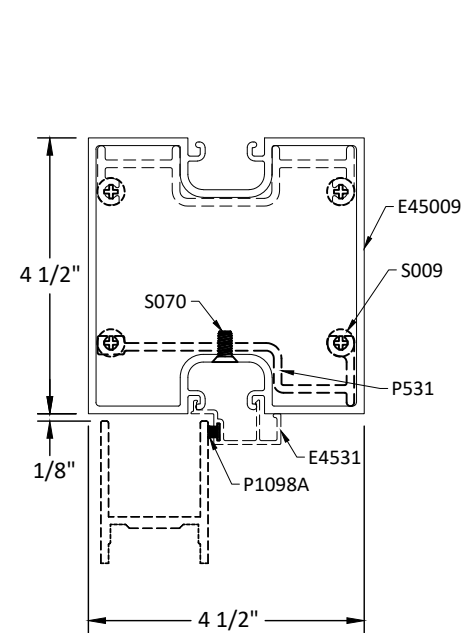
D
7
DOOR TRANSOM



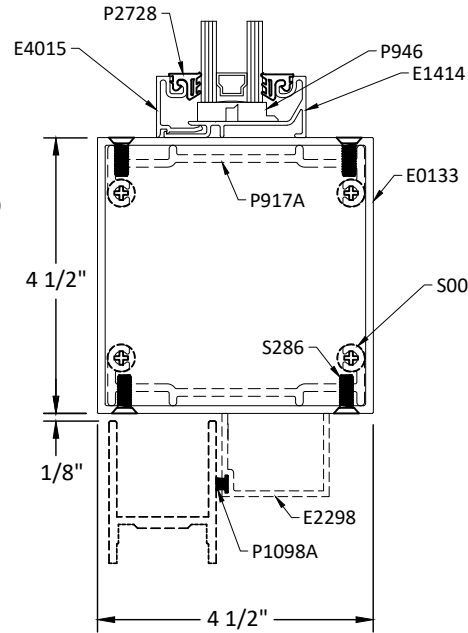
A
7
DOOR HEADER



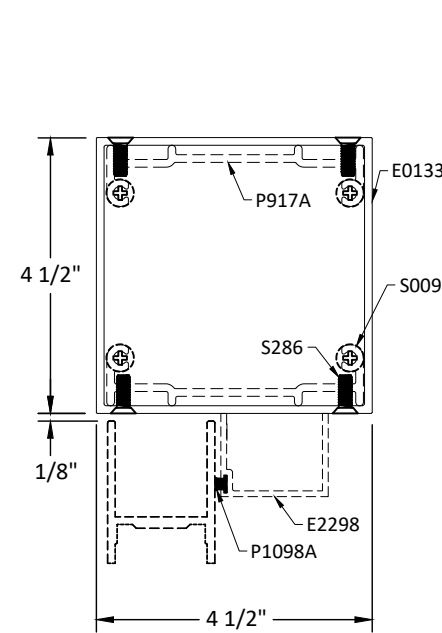
B
7
DOOR HEADER



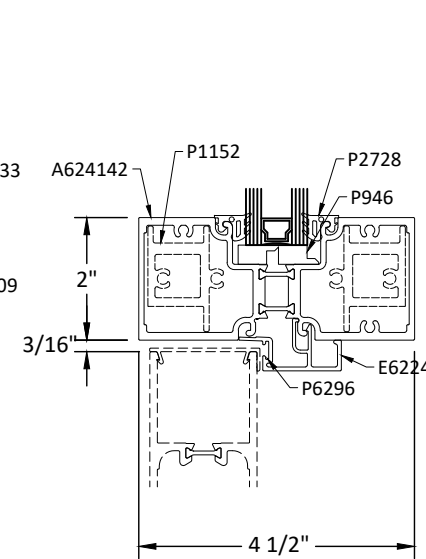
C
7
DOOR HEADER



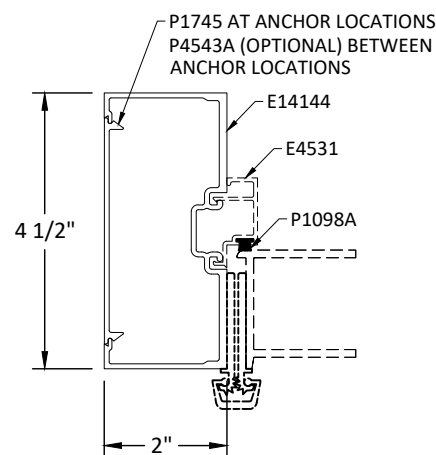
E
7
DOOR HEADER



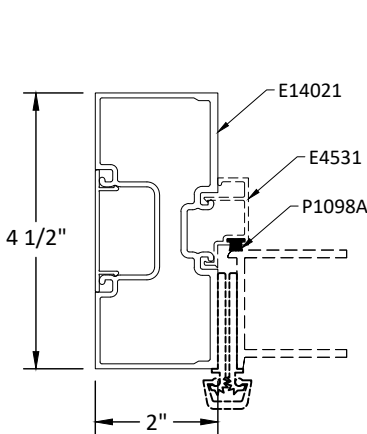
F
7
DOOR HEADER



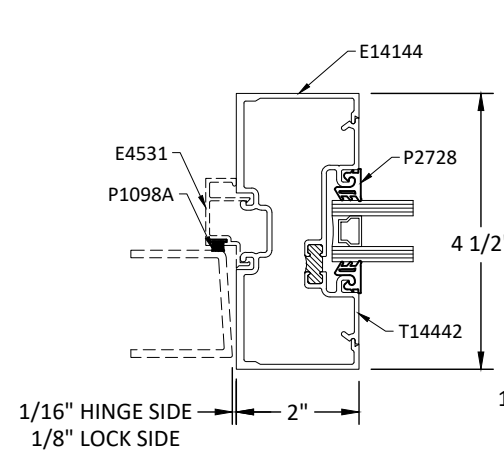
M
7
DOOR HEADER
FOR USE IN CONJUNCTION WITH STEEL
REINFORCED DOOR MULLION JAMBS



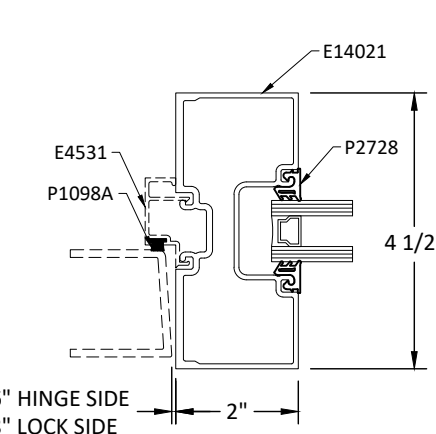
G
7
DOOR HINGE JAMB



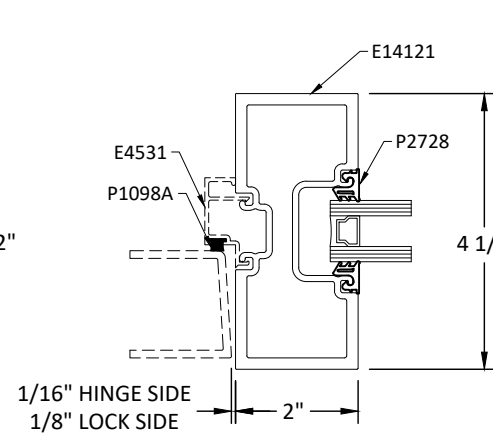
H
7
DOOR HINGE JAMB



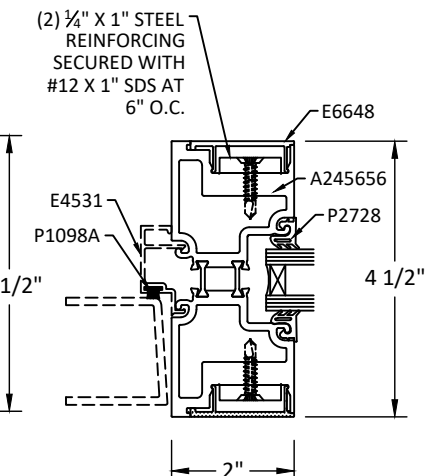
I
7
DOOR LOCK MULLION
HINGE SIDE SIMILAR



J
7
DOOR LOCK MULLION
HINGE SIDE SIMILAR



K
7
DOOR LOCK MULLION
HINGE SIDE SIMILAR



L
7
DOOR LOCK MULLION
HINGE SIDE SIMILAR

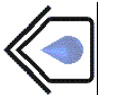
TUBELITE

DEPENDABLE
LEADERS IN ECO-EFFICIENT STOREFRONT,
CURTAINWALL AND ENTRANCE SYSTEMS

3056 WALKER RIDGE DRIVE N.W.
WALKER, MICHIGAN 49544
PH: 800 866 2227 FX: 616 301 0008

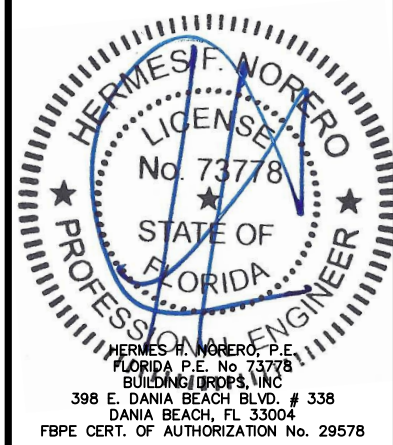
TITLE: 14000 SERIES
STOREFRONT FRAMING
(NON-HVHZ)(NON-IMPACT)
OUTSIDE GLAZED DOOR DETAILS

PREPARED BY:
BUILDING DROPS, INC.
398 E. DANIA BEACH BLVD., STE. 338
DANIA BEACH, FL 33004
PH: (954) 399-8478
FAX: (954) 744-4738
WEB: www.buildingdrops.com



| REMARKS | BY | DATE |
|-----------------|----|-------|
| FBC 2020 UPDATE | LL | 10/28 |
| | | |
| | | |

THE INSTALLATION DETAILS DESCRIBED HEREIN ARE GENERIC AND MAY NOT REFLECT ACTUAL CONDITIONS FOR A SPECIFIC SITE. IF SITE CONDITIONS CAUSE INSTALLATION TO DEVIATE FROM THE REQUIREMENTS DETAILED HEREIN, A LICENSED ENGINEER OR ARCHITECT SHALL PREPARE SITE SPECIFIC DOCUMENTS FOR USE WITH THIS DOCUMENT



FL #:

FL16992

DATE: **03.26.19**

| | |
|-----------------------|------------------------|
| DWG. BY: RV | CHK. BY: HFN |
|-----------------------|------------------------|

SCALE: **NTS**

DWG. #: **TLI004**

SECTION
7
OF 11

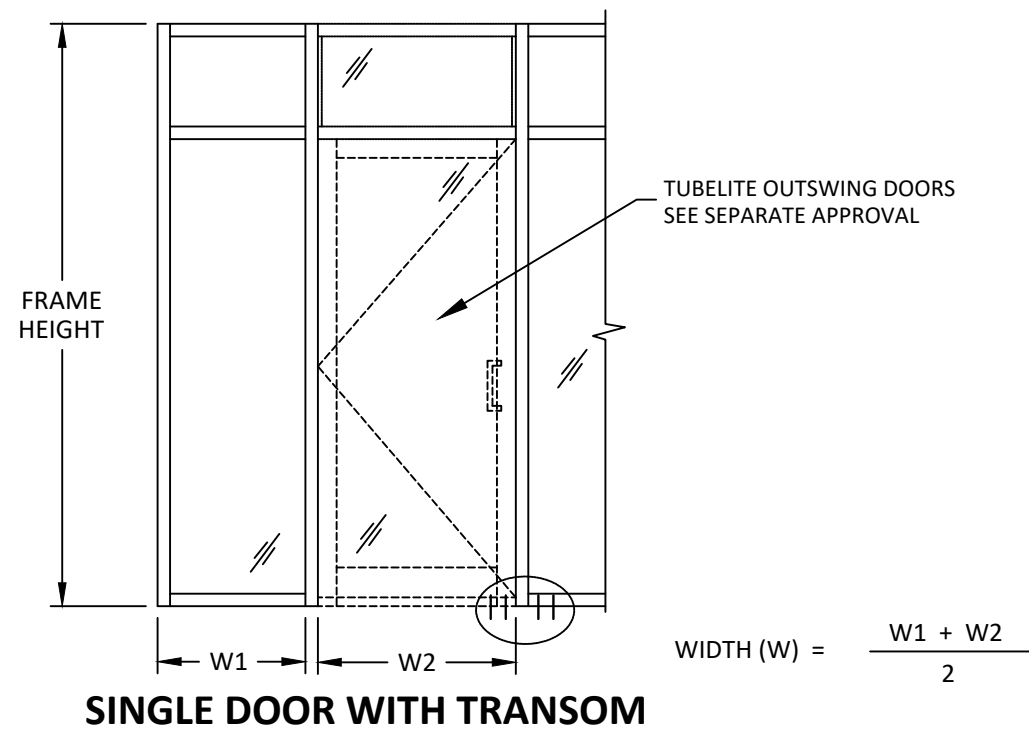
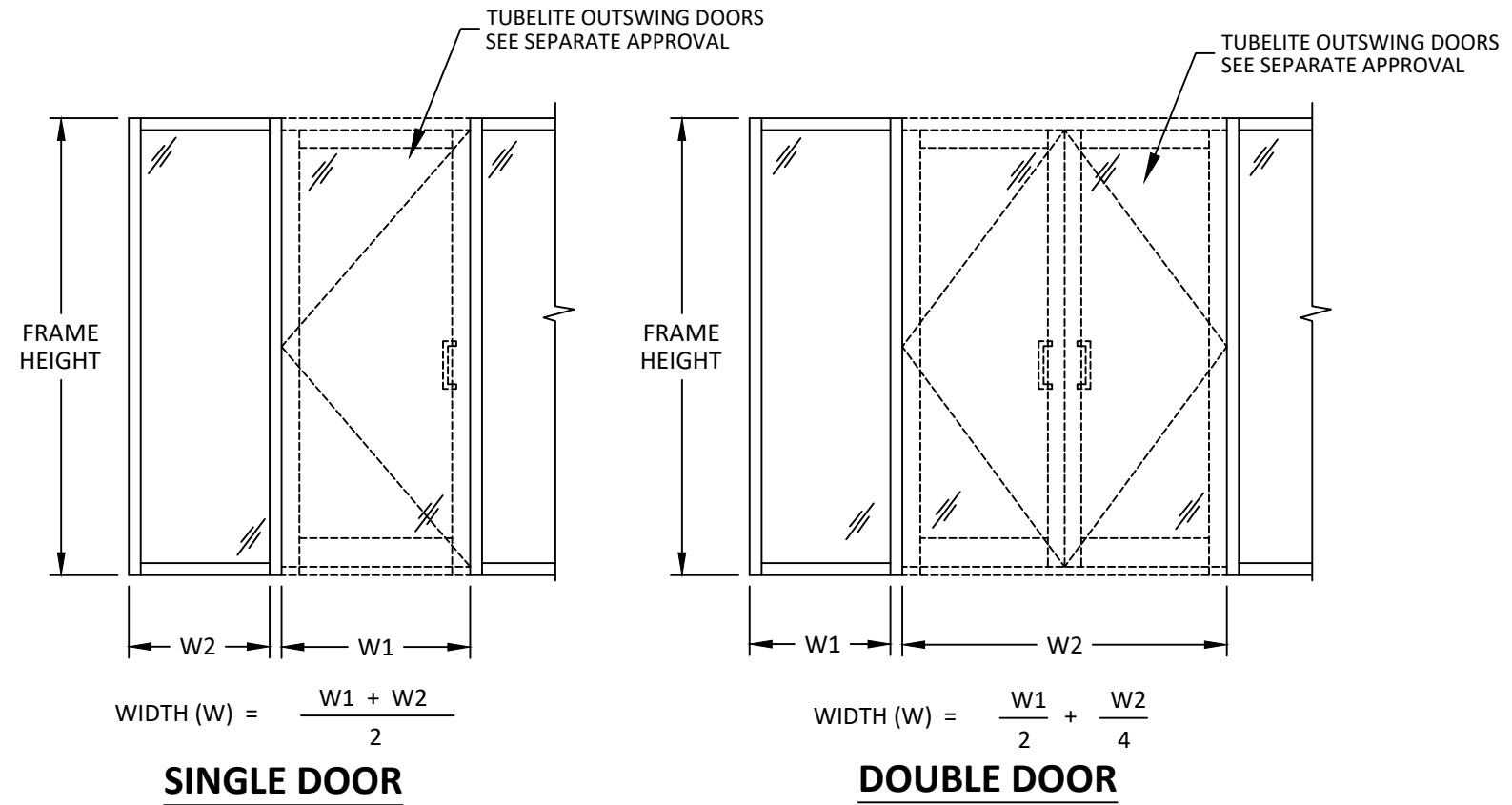
c:\users\p50\onedrive - building drops, inc.\tl004 2020-12-20.dwg

DOOR MULLION DESIGN PRESSURE TABLES

| DOOR MULLION LOAD CAPACITY - WITHOUT STEEL (DETAIL I/7, J/7 OR K/7) | | |
|---|--------------|----------------------|
| NOMINAL DIMS. | | LOADS - PSF |
| WIDTH (W) | FRAME HEIGHT | EXT. (+) INT. (-) |
| 24 | 84 | 45.0 |
| 30 | | 45.0 |
| 36 | | 45.0 |
| 42 | | 45.0 |
| 48 | | 44.4 |
| 54 | | 41.5 |
| 60 | 38.2 | |
| 24 | 90 | 45.0 |
| 30 | | 45.0 |
| 36 | | 45.0 |
| 42 | | 44.1 |
| 48 | | 40.4 |
| 54 | | 37.0 |
| 60 | 33.3 | |
| 24 | 96 | 45.0 |
| 30 | | 45.0 |
| 36 | | 45.0 |
| 42 | | 40.6 |
| 48 | | 36.5 |
| 54 | | 32.5 |
| 60 | 29.2 | |
| 24 | 102 | 45.0 |
| 30 | | 45.0 |
| 36 | | 41.6 |
| 42 | | 35.6 |
| 48 | | 31.2 |
| 54 | | 27.7 |
| 60 | 24.9 | |
| 24 | 108 | 45.0 |
| 30 | | 42.0 |
| 36 | | 35.0 |
| 42 | | 30.0 |
| 48 | | 26.3 |
| 54 | | 23.3 |
| 24 | 114 | 44.6 |
| 30 | | 35.7 |
| 36 | | 29.8 |
| 42 | | 25.5 |
| 48 | | 22.3 |
| 54 | | 19.1 |
| 24 | 120 | 45.0 |
| 30 | | 45.0 |
| 36 | | 45.0 |
| 42 | | 45.0 |
| 48 | | 45.0 |
| 54 | | 45.0 |

| DOOR MULLION LOAD CAPACITY WITH STEEL (DETAIL L/7) | | |
|--|--------------|----------------------|
| NOMINAL DIMS. | | LOADS - PSF |
| WIDTH (W) | FRAME HEIGHT | EXT. (+) INT. (-) |
| 24 | 102 | 45.0 |
| 30 | | 45.0 |
| 36 | | 45.0 |
| 42 | | 45.0 |
| 48 | | 45.0 |
| 54 | | 45.0 |
| 60 | 45.0 | |
| 24 | 108 | 45.0 |
| 30 | | 45.0 |
| 36 | | 45.0 |
| 42 | | 45.0 |
| 48 | | 45.0 |
| 54 | | 45.0 |
| 60 | 44.4 | |
| 24 | 114 | 45.0 |
| 30 | | 45.0 |
| 36 | | 45.0 |
| 42 | | 45.0 |
| 48 | | 45.0 |
| 54 | | 45.0 |
| 60 | 41.2 | |
| 24 | 120 | 45.0 |
| 30 | | 45.0 |
| 36 | | 45.0 |
| 42 | | 45.0 |
| 48 | | 45.0 |
| 54 | | 41.4 |
| 60 | 38.5 | |
| 24 | 126 | 45.0 |
| 30 | | 45.0 |
| 36 | | 45.0 |
| 42 | | 45.0 |
| 48 | | 42.4 |
| 54 | | 38.9 |
| 60 | 36.1 | |
| 24 | 132 | 45.0 |
| 30 | | 45.0 |
| 36 | | 45.0 |
| 42 | | 44.6 |
| 48 | | 40.1 |
| 54 | | 36.6 |
| 60 | 33.9 | |
| 24 | 138 | 45.0 |
| 30 | | 45.0 |
| 36 | | 45.0 |
| 42 | | 42.3 |
| 48 | | 38.0 |
| 54 | | 34.7 |
| 60 | 31.2 | |
| 24 | 144 | 45.0 |
| 30 | | 45.0 |
| 36 | | 45.0 |
| 42 | | 40.2 |
| 48 | | 35.4 |
| 54 | | 31.5 |
| 60 | 28.4 | |

NOTE:
1. USE DETAIL M/7 WHEN USING STEEL REINFORCED MULLION WITH A TRANSOM



TUBELITE
 DEPENDABLE
 LEADERS IN ECO-EFFICIENT STOREFRONT, CURTAINWALL AND ENTRANCE SYSTEMS

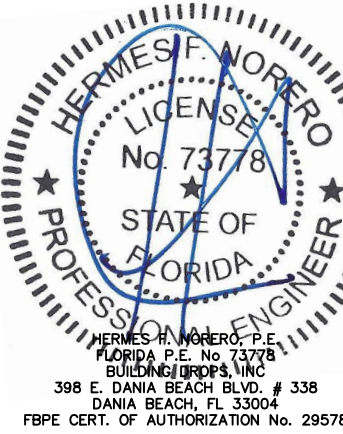
3056 WALKER RIDGE DRIVE N.W.
 WALKER, MICHIGAN 49544
 PH: 800 866 2227 FX: 616 301 0008

TITLE: 14000 SERIES STOREFRONT FRAMING (NON-HVHZ)(NON-IMPACT) OUTSIDE GLAZED EXPANSION VERTICAL DETAILS AND DESIGN PRESSURES

PREPARED BY: BUILDING DROPS, INC.
 398 E. DANIA BEACH BLVD., STE. 338
 DANIA BEACH, FL 33004
 PH: (954) 959-8478
 FAX: (954) 744-4738
 WEB: www.buildingdrops.com

| REMARKS | BY | DATE |
|-----------------|----|-------|
| FBC 2020 UPDATE | LL | 10/28 |
| | | |
| | | |

THE INSTALLATION DETAILS DESCRIBED HEREIN ARE GENERIC AND MAY NOT REFLECT ACTUAL CONDITIONS FOR A SPECIFIC SITE. IF SITE CONDITIONS CAUSE INSTALLATION TO DEVIATE FROM THE REQUIREMENTS DETAILED HEREIN, A LICENSED ENGINEER OR ARCHITECT SHALL PREPARE SITE SPECIFIC DOCUMENTS FOR USE WITH THIS DOCUMENT



FL #: **FL16992**

DATE: **03.26.19**

DWG. BY: **RV** CHK. BY: **HFN**

SCALE: **NTS**

DWG. #: **TLI004**

SECTION

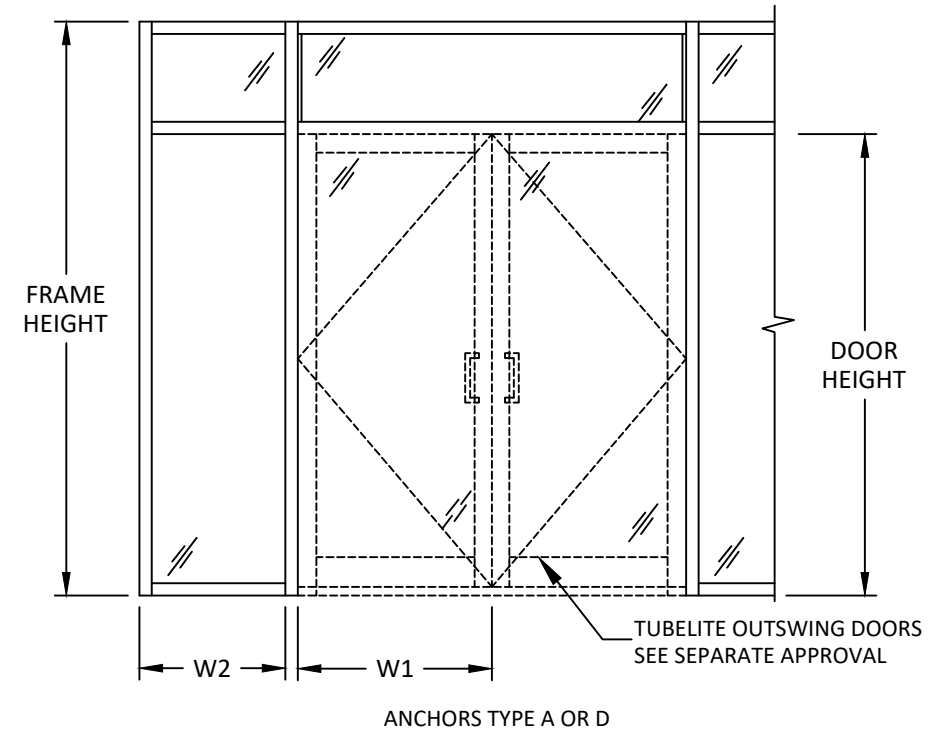
OF 11

DOOR MULLION DESIGN PRESSURE TABLES

| DOUBLE DOOR MULLION WITH TRANSOM LOAD CAPACITY - WITHOUT STEEL (DETAIL I/7, J/7 OR K/7) | | | | | |
|---|----------------------|---------------------|-------------------|------|------|
| NOMINAL DIMS. | | | LOADS - PSF | | |
| FRAME HEIGHT INCHES | DOOR LEAF WIDTH (W1) | SIDELITE WIDTH (W2) | EXT. (+) INT. (-) | | |
| 84 | 36 | 30 | 42.9 | | |
| | | 36 | 41.5 | | |
| | | 42 | 40.2 | | |
| | | 48 | 38.2 | | |
| | | 54 | 36.4 | | |
| | | 60 | 34.7 | | |
| | 42 | 30 | 40.2 | | |
| | | 36 | 38.2 | | |
| | | 42 | 36.4 | | |
| | | 48 | 34.7 | | |
| | | 54 | 33.2 | | |
| | | 60 | 31.8 | | |
| | 48 | 30 | 36.4 | | |
| | | 36 | 34.7 | | |
| | | 42 | 33.2 | | |
| | | 48 | 31.8 | | |
| | | 90 | 36 | 30 | 38.9 |
| | | | | 36 | 37.0 |
| 42 | 35.0 | | | | |
| 42 | 48 | | 33.3 | | |
| | 54 | | 31.7 | | |
| | 60 | | 30.2 | | |
| 48 | 30 | 35.0 | | | |
| | 36 | 33.3 | | | |
| | 42 | 31.7 | | | |
| | 48 | 30.2 | | | |
| | 96 | 36 | 30 | 31.7 | |
| | | | 36 | 30.2 | |
| 42 | | | 32.5 | | |
| 42 | | 48 | 30.8 | | |
| | | 54 | 29.2 | | |
| | | 60 | 27.8 | | |
| 48 | 30 | 30.8 | | | |
| | 36 | 29.2 | | | |
| | 42 | 27.8 | | | |
| | 48 | 27.8 | | | |
| | 102 | 36 | 30 | 29.3 | |
| | | | 36 | 27.7 | |
| 42 | | | 26.2 | | |
| 42 | | 48 | 24.9 | | |
| | | 30 | 26.2 | | |
| | | 36 | 24.9 | | |
| 108 | 36 | 30 | 24.7 | | |
| | | 36 | 23.3 | | |
| 114 | 36 | 30 | 21.0 | | |

| DOUBLE DOOR MULLION WITH TRANSOM LOAD CAPACITY - WITH STEEL (DETAIL L/7) | | | |
|--|----------------------|---------------------|-------------------|
| NOMINAL DIMS. | | | LOADS - PSF |
| FRAME HEIGHT INCHES | DOOR LEAF WIDTH (W1) | SIDELITE WIDTH (W2) | EXT. (+) INT. (-) |
| 102 | 36 | 30 | 45.0 |
| | | 36 | 45.0 |
| | | 42 | 45.0 |
| | | 48 | 45.0 |
| | | 54 | 45.0 |
| | | 60 | 45.0 |
| | 42 | 30 | 45.0 |
| | | 36 | 45.0 |
| | | 42 | 45.0 |
| | | 48 | 45.0 |
| | | 54 | 44.6 |
| | | 60 | 43.7 |
| | 48 | 30 | 45.0 |
| | | 36 | 45.0 |
| | | 42 | 44.6 |
| | | 48 | 43.7 |
| | | 54 | 42.9 |
| | | 60 | 42.3 |
| 108 | 36 | 36 | 45.0 |
| | | 42 | 45.0 |
| | | 48 | 44.4 |
| | 42 | 54 | 43.1 |
| | | 60 | 42.0 |
| | | 30 | 45.0 |
| 48 | 36 | 44.4 | |
| | 42 | 43.1 | |
| | 48 | 42.0 | |
| | 54 | 41.0 | |
| | 60 | 40.1 | |
| | 114 | 36 | 30 |
| 36 | | | 42.0 |
| 42 | | | 41.0 |
| 48 | | 48 | 40.1 |
| | | 54 | 39.3 |
| | | 60 | 38.6 |
| 120 | 36 | 36 | 44.2 |
| | | 42 | 42.6 |
| | | 48 | 41.2 |
| | 42 | 54 | 40.0 |
| | | 60 | 38.9 |
| | | 30 | 42.6 |
| 48 | 36 | 41.2 | |
| | 42 | 40.0 | |
| | 48 | 38.9 | |
| | 54 | 37.9 | |
| | 60 | 37.0 | |
| | 54 | 36.2 | |
| 126 | 36 | 36 | 41.4 |
| | | 42 | 39.8 |
| | | 48 | 38.5 |
| | 42 | 54 | 37.3 |
| | | 60 | 36.2 |
| | | 30 | 39.8 |
| 48 | 36 | 38.5 | |
| | 42 | 37.3 | |
| | 48 | 36.2 | |
| | 54 | 35.2 | |
| | 60 | 34.3 | |
| | 30 | 37.3 | |
| 132 | 36 | 36 | 36.2 |
| | | 42 | 35.2 |
| | 48 | 36 | 36.2 |
| | | 42 | 35.2 |
| 138 | 36 | 36 | 36.2 |
| | | 42 | 35.2 |
| | 48 | 36 | 36.2 |
| | | 42 | 35.2 |
| 144 | 36 | 36 | 36.2 |
| | | 42 | 35.2 |
| | 48 | 36 | 36.2 |
| | | 42 | 35.2 |

| DOUBLE DOOR MULLION WITH TRANSOM LOAD CAPACITY - WITH STEEL (DETAIL L/7) | | | |
|--|----------------------|---------------------|-------------------|
| NOMINAL DIMS. | | | LOADS - PSF |
| FRAME HEIGHT INCHES | DOOR LEAF WIDTH (W1) | SIDELITE WIDTH (W2) | EXT. (+) INT. (-) |
| 126 | 36 | 36 | 38.9 |
| | | 42 | 37.4 |
| | | 48 | 36.1 |
| | | 54 | 34.9 |
| | | 60 | 33.8 |
| | | 30 | 37.4 |
| | 42 | 36 | 36.1 |
| | | 42 | 34.9 |
| | | 48 | 33.8 |
| | | 54 | 32.6 |
| | | 30 | 34.9 |
| | | 36 | 33.8 |
| | 48 | 36 | 33.8 |
| | | 42 | 32.6 |
| | | 48 | 31.0 |
| | | 54 | 32.5 |
| | | 60 | 31.0 |
| | | 30 | 35.2 |
| 132 | 36 | 36 | 36.6 |
| | | 42 | 35.2 |
| | | 48 | 33.9 |
| | 42 | 42 | 32.5 |
| | | 48 | 31.0 |
| | | 30 | 32.5 |
| 48 | 36 | 31.0 | |
| | 36 | 34.7 | |
| | 42 | 32.9 | |
| | 48 | 31.2 | |
| | 54 | 29.7 | |
| | 30 | 32.9 | |
| 138 | 36 | 30 | 32.9 |
| | | 42 | 31.2 |
| | | 48 | 29.7 |
| | 42 | 48 | 30 |
| | | 30 | 29.7 |
| | | 36 | 31.5 |
| 144 | 36 | 42 | 29.8 |
| | | 48 | 28.4 |
| | | 30 | 29.8 |
| | 42 | 36 | 28.4 |
| | | 30 | 29.8 |
| | | 36 | 28.4 |



DOUBLE DOOR WITH TRANSOM

NOTE:
1. USE DETAIL M/7 WHEN USING STEEL REINFORCED MULLION WITH A TRANSOM

TUBELITE
DEPENDABLE
LEADERS IN ECO-EFFICIENT STOREFRONT, CURTAINWALL AND ENTRANCE SYSTEMS

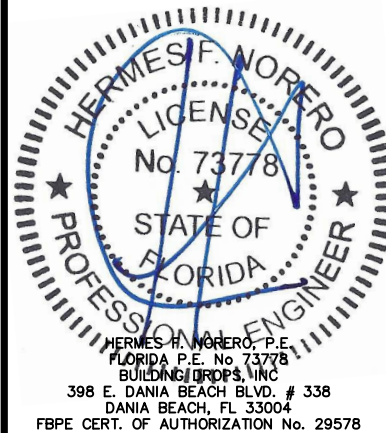
3056 WALKER RIDGE DRIVE N.W.
WALKER, MICHIGAN 49544
PH: 800 866 2227 FX: 616 301 0008

TITLE: 14000 SERIES
STOREFRONT FRAMING
(NON-HVHZ)(NON-IMPACT)
OUTSIDE GLAZED EXPANSION
VERTICAL DETAILS
AND DESIGN PRESSURES

PREPARED BY:
BUILDING DROPS, INC.
398 E. DANIA BEACH BLVD., STE. 338
DANIA BEACH, FL 33004
PH: (954) 999-8478
FAX: (954) 744-4738
WEB: www.buildingdrops.com

| REMARKS | BY | DATE |
|-----------------|----|-------|
| FBC 2020 UPDATE | LL | 10/28 |
| | | |
| | | |

THE INSTALLATION DETAILS DESCRIBED HEREIN ARE GENERIC AND MAY NOT REFLECT ACTUAL CONDITIONS FOR A SPECIFIC SITE. IF SITE CONDITIONS CAUSE INSTALLATION TO DEVIATE FROM THE REQUIREMENTS DETAILED HEREIN, A LICENSED ENGINEER OR ARCHITECT SHALL PREPARE SITE SPECIFIC DOCUMENTS FOR USE WITH THIS DOCUMENT



FL #:
FL16992

DATE: **03.26.19**

DWG. BY: **RV** CHK. BY: **HFN**

SCALE: **NTS**

DWG. #: **TLI004**

SECTION

9

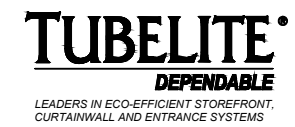
12/20/2020 7:51 PM

ANCHOR SCHEDULE

| TYPE | ANCHOR | SUBSTRATE | MIN. EMBEDMENT | MIN. EDGE DISTANCE | MAX. SHIM SIZE | HEAD ANCHOR QTY PER VERTICAL UP TO 8' HEIGHT | HEAD ANCHOR QTY PER VERTICAL UP TO 13' HEIGHT | SILL ANCHOR QTY PER VERTICAL UP TO 8' HEIGHT | SILL ANCHOR QTY PER VERTICAL UP TO 13' HEIGHT |
|------|---|---|----------------|--------------------|----------------|--|---|--|---|
| A | 1/4" ELCO ULTRACON (CARBON STEEL) | 3000 PSI CONCRETE MIN. OR GROUT FILLED CMU PER ASTM C-90 W/ MIN. F'C=2000 PSI | 1.75" | 2.5" | 0.25" | 4 | 4 | 4 | 4 |
| B | 1/4" ITW TAPCON (CARBON OR STAINLESS STEEL) | | 1.75" | 2.5" | 0.25" | 4 | 6 | 4 | 6 |
| C | 1/4" HILTI KWIK-CON II+ (CARBON OR STAINLESS STEEL) | | 1" | 2.5" | 0.25" | 4 | 4 | 4 | 4 |
| E | #14 WOOD SCREW | 2X WOOD MIN. S.G.=0.55 | 1.5" | 1" | 0.25" | 4 | 6 | 4 | 6 |
| G | 1/4" GR. 5 SELF-TAPPING/DRILLING SCREW | MIN. 18 GA STEEL STUD (0.0478") 33 KSI OR MIN. 0.090" 6063-T5 ALUMINUM | 3 THREADS* | 1" | 0.25" | 2 | 4 | 4 | 4 |
| H | 3/8" POWERS TAPPER (CARBON STEEL) | 3000 PSI CONCRETE MIN. | 1.25" | 2.5" | 1/2" | 2 | 4 | 2 | 4 |
| I | 3/8" POWERS TAPPER (CARBON STEEL) | GROUT FILLED CMU PER ASTM C-90. MIN. F'C=2000 PSI | 1.75" | 3" | 1/2" | 2 | 4 | 2 | 4 |
| J | 3/8" ITW LDT (CARBON STEEL) | 3000 PSI CONCRETE MIN. | 1.5" | 2.5" | 1/2" | 2 | 4 | 2 | 4 |
| K | 3/8" ITW LDT (CARBON STEEL) | GROUT FILLED CMU PER ASTM C-90. MIN. F'C=2000 PSI | 1.5" | 3" | 1/2" | 2 | 4 | 2 | 4 |
| L | 3/8" ITW TRUBOLT WEDGE (CARBON STEEL OR SS) | 2000 PSI CONCRETE MIN. | 1.5" | 2.5" | 1/2" | 2 | 2 | 2 | 4 |
| M | 3/8" LAG SCREW | 2X WOOD MIN. S.G.=0.55 | 1.5" | 1.5" | 1/2" | 4 | 6 | 4 | 6 |
| N | 5/16" GR. 5 SELF-TAPPING/DRILLING SCREW | MIN. 18 GA STEEL STUD (0.0478") 33 KSI OR MIN. 0.090" 6063-T5 ALUMINUM | 3 THREADS* | 1" | 1/2" | 2 | 4 | 2 | 4 |

INSTALLATION NOTES:

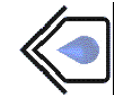
- *FOR STEEL AND ALUMINUM, ANCHOR SHALL BE OF SUFFICIENT LENGTH TO ACHIEVE 3 THREADS OF PENETRATION BEYOND THE WALL OF THE METAL.
- ANCHOR QUANTITIES SHOWN ABOVE ARE FOR INTERMEDIATE VERTICALS. AT JAMBS, USE HALF OF THE QUANTITY SHOWN ABOVE. FOR INTERMEDIATE VERTICALS WITH DOOR JAMB ON ONE SIDE, PLACE THE TOTAL NUMBER OF ANCHORS REQUIRED THROUGH THE SIDELITE.
- ONE (1) INSTALLATION ANCHOR IS REQUIRED AT EACH ANCHOR LOCATION SHOWN.
- THE NUMBER OF INSTALLATION ANCHORS DEPICTED IS THE MINIMUM NUMBER OF ANCHORS TO BE USED FOR PRODUCT INSTALLATION.
- INSTALL INDIVIDUAL INSTALLATION ANCHORS WITHIN A TOLERANCE OF ±1/2 INCH OF THE DEPICTED LOCATION IN THE ANCHOR LAYOUT DETAIL (I.E., WITHOUT CONSIDERATION OF TOLERANCES). TOLERANCES ARE NOT CUMULATIVE FROM ONE INSTALLATION ANCHOR TO THE NEXT.
- SHIM AS REQUIRED AT EACH INSTALLATION ANCHOR WITH LOAD BEARING SHIM(S). MAXIMUM ALLOWABLE SHIM STACK TO BE 1/2 INCH. SHIM WHERE SPACE OF 1/16 INCH OR GREATER OCCURS. SHIM(S) SHALL BE CONSTRUCTED OF HIGH DENSITY PLASTIC OR BETTER.
- MINIMUM EMBEDMENT AND EDGE DISTANCE EXCLUDE WALL FINISHES, INCLUDING BUT NOT LIMITED TO STUCCO, FOAM, BRICK VENEER, AND SIDING.
- INSTALLATION ANCHORS AND ASSOCIATED HARDWARE MUST BE MADE OF CORROSION RESISTANT MATERIAL OR HAVE A CORROSION RESISTANT COATING.
- INSTALLATION ANCHORS SHALL BE INSTALLED IN ACCORDANCE WITH ANCHOR MANUFACTURER'S INSTALLATION INSTRUCTIONS, AND ANCHORS SHALL NOT BE USED IN SUBSTRATES WITH STRENGTHS LESS THAN THE MINIMUM STRENGTH SPECIFIED BY THE ANCHOR MANUFACTURER.



3056 WALKER RIDGE DRIVE N.W.
WALKER, MICHIGAN 49544
PH: 800 866 2227 FX: 616 301 0008

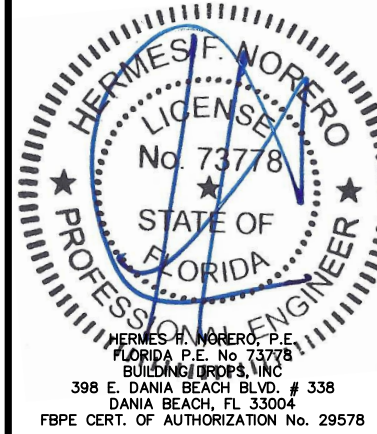
TITLE: 14000 SERIES STOREFRONT FRAMING (NON-HVHZ)(NON-IMPACT) ANCHOR SCHEDULE & INSTALLATION NOTES

PREPARED BY: BUILDING DROPS, INC.
398 E. DANIA BEACH BLVD., STE. 338
DANIA BEACH, FL 33004
PH: (954)399-8478
FAX: (954)744-4738
WEB: www.buildingdrops.com



| REMARKS | BY | DATE |
|-----------------|----|-------|
| FBC 2020 UPDATE | LL | 10/28 |
| | | |
| | | |

THE INSTALLATION DETAILS DESCRIBED HEREIN ARE GENERIC AND MAY NOT REFLECT ACTUAL CONDITIONS FOR A SPECIFIC SITE. IF SITE CONDITIONS CAUSE INSTALLATION TO DEVIATE FROM THE REQUIREMENTS DETAILED HEREIN, A LICENSED ENGINEER OR ARCHITECT SHALL PREPARE SITE SPECIFIC DOCUMENTS FOR USE WITH THIS DOCUMENT



FL #: **FL16992**

DATE: **03.26.19**

DWG. BY: **RV** | CHK. BY: **HFN**

SCALE: **NTS**

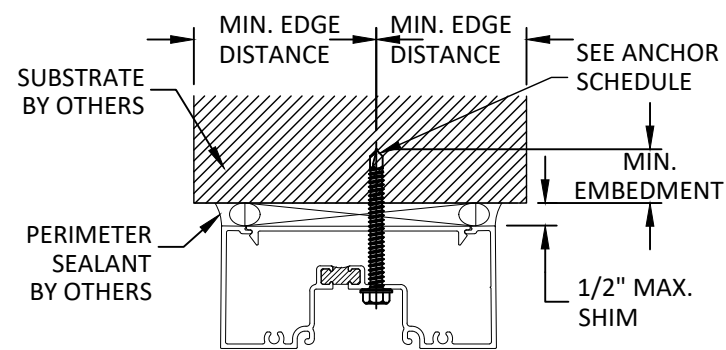
DWG. #: **TLI004**

SECTION **10**

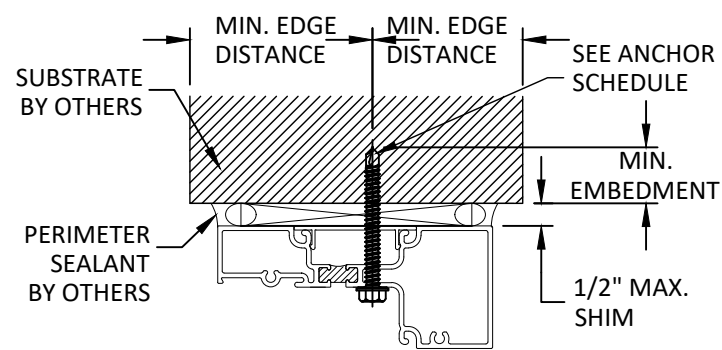
OF 11

c:\users\p50\onedrive - building drops, inc\1004 2020-12-20.dwg

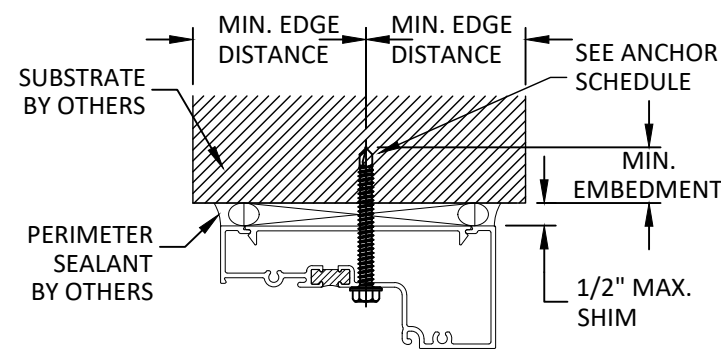
12/20/2020 7:51 PM



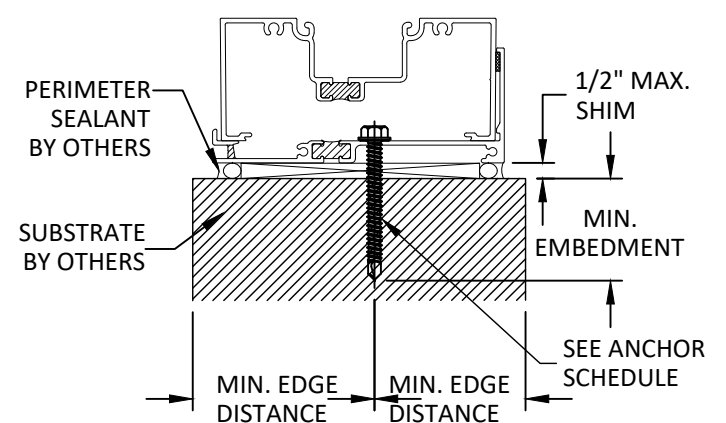
A HEAD ANCHOR DETAIL
11



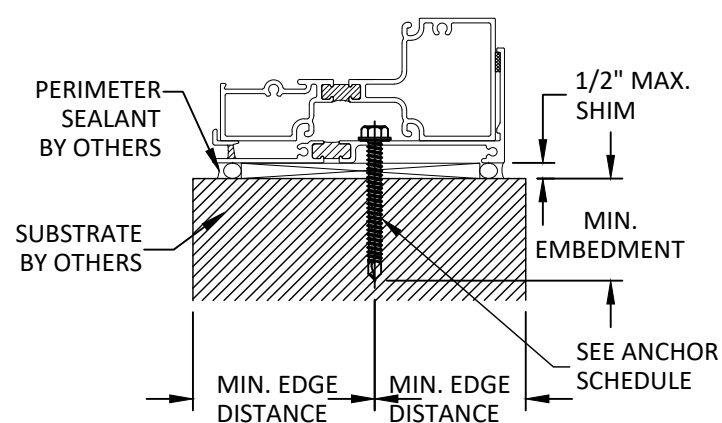
B HEAD ANCHOR DETAIL
11



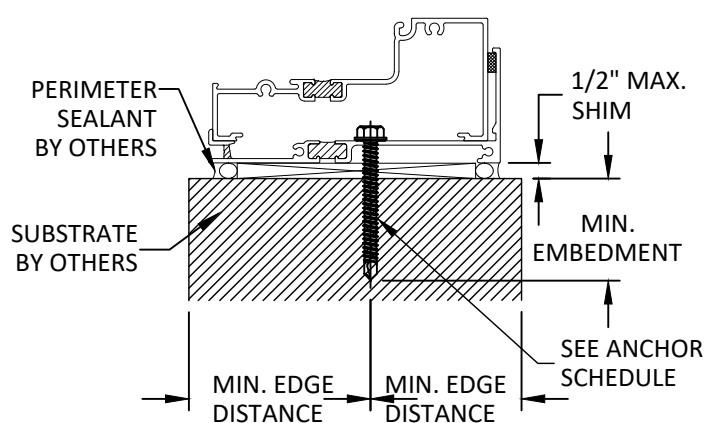
C HEAD ANCHOR DETAIL
11



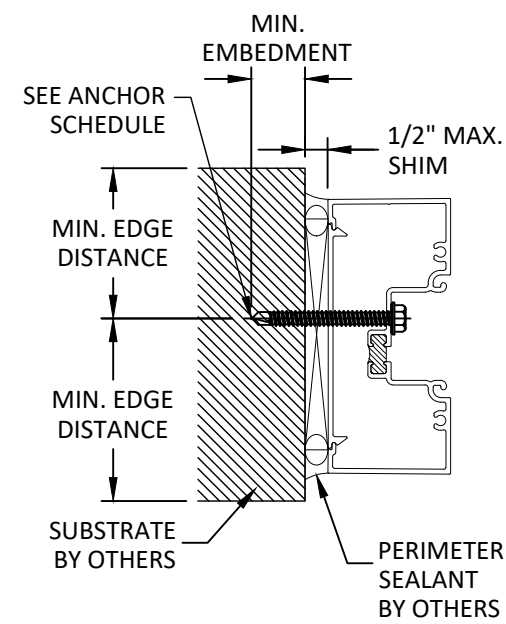
D SILL ANCHOR DETAIL
11



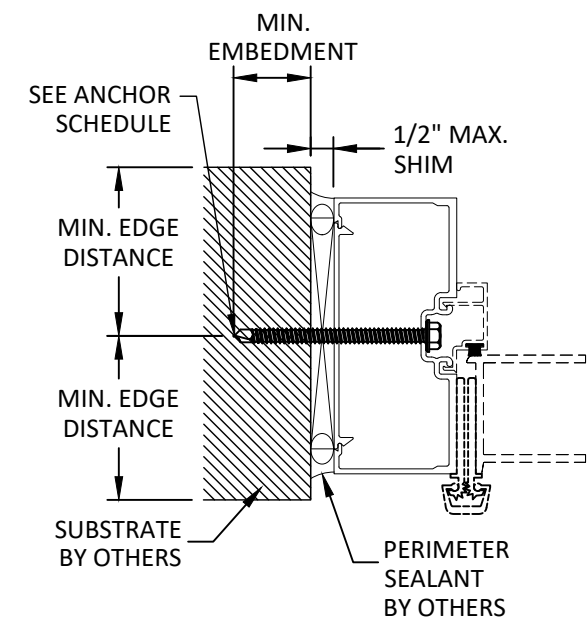
E SILL ANCHOR DETAIL
11



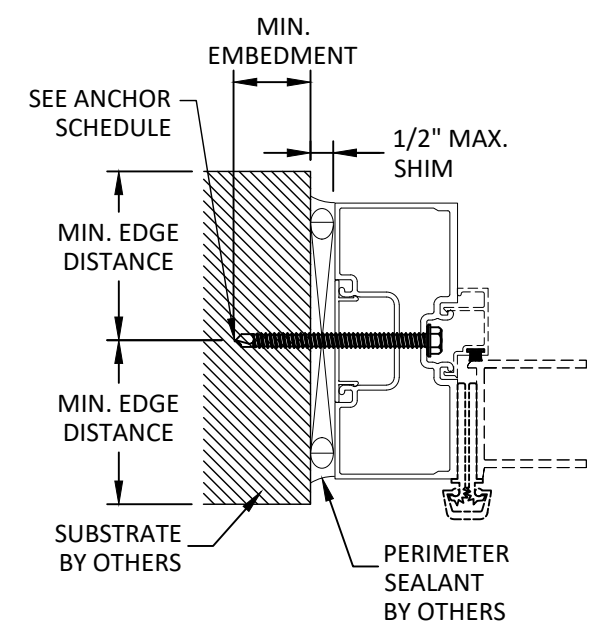
F SILL ANCHOR DETAIL
11



G JAMB ANCHOR DETAIL
11



H JAMB ANCHOR DETAIL
11



I JAMB ANCHOR DETAIL
11

- NOTES:
1. SEE SHEET 10 FOR ADDITIONAL ANCHOR INFORMATION.
 2. THERMALLY BROKEN T14000 PROFILES SHOWN. NON-THERMALLY BROKEN E14000 PROFILES ARE QUALIFIED FOR THE SAME DETAILS AND RATINGS.
 3. DOORS UNDER SEPARATE APPROVAL.

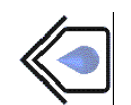
TUBELITE
DEPENDABLE

LEADERS IN ECO-EFFICIENT STOREFRONT,
CURTAINWALL AND ENTRANCE SYSTEMS

3056 WALKER RIDGE DRIVE N.W.
WALKER, MICHIGAN 49544
PH: 800 866 2227 FX: 616 301 0008

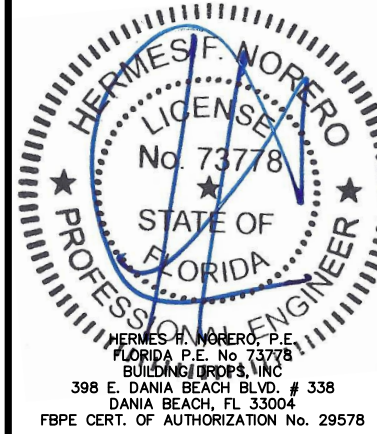
TITLE: 14000 SERIES
STOREFRONT FRAMING
(NON-HVHZ)(NON-IMPACT)
ANCHOR DETAILS

PREPARED BY:
BUILDING DROPS, INC.
398 E. DANIA BEACH BLVD., STE. 338
DANIA BEACH, FL 33004
PH: (954) 999-8478
FAX: (954) 744-4738
WEB: www.buildingdrops.com



| REMARKS | BY | DATE |
|-----------------|----|-------|
| FBC 2020 UPDATE | LL | 10/28 |
| | | |
| | | |

THE INSTALLATION DETAILS DESCRIBED HEREIN ARE GENERIC AND MAY NOT REFLECT ACTUAL CONDITIONS FOR A SPECIFIC SITE. IF SITE CONDITIONS CAUSE INSTALLATION TO DEVIATE FROM THE REQUIREMENTS DETAILED HEREIN, A LICENSED ENGINEER OR ARCHITECT SHALL PREPARE SITE SPECIFIC DOCUMENTS FOR USE WITH THIS DOCUMENT



HERMES F. NORERO, P.E.
FLORIDA P.E. No. 73778
BUILDING DROPS, INC.
398 E. DANIA BEACH BLVD. # 338
DANIA BEACH, FL 33004
FBPE CERT. OF AUTHORIZATION No. 29578

FL #: **FL16992**

DATE: **03.26.19**

DWG. BY: **RV** CHK. BY: **HFN**

SCALE: **NTS**

DWG. #: **TLI004**

SECTION
11

c:\users\p50\onedrive - building drops, inc.\tl004 2020-12-20.dwg